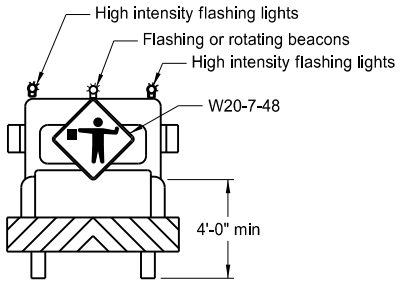
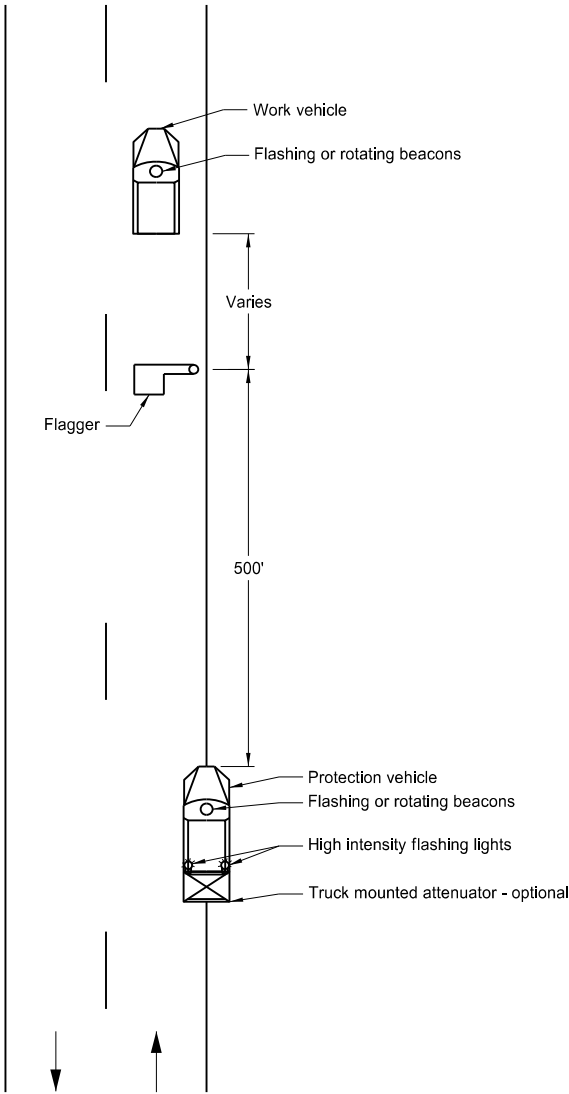
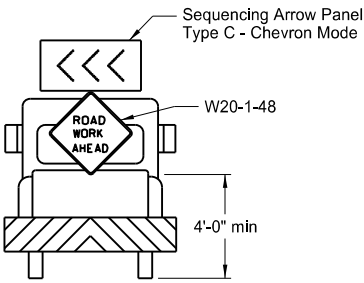
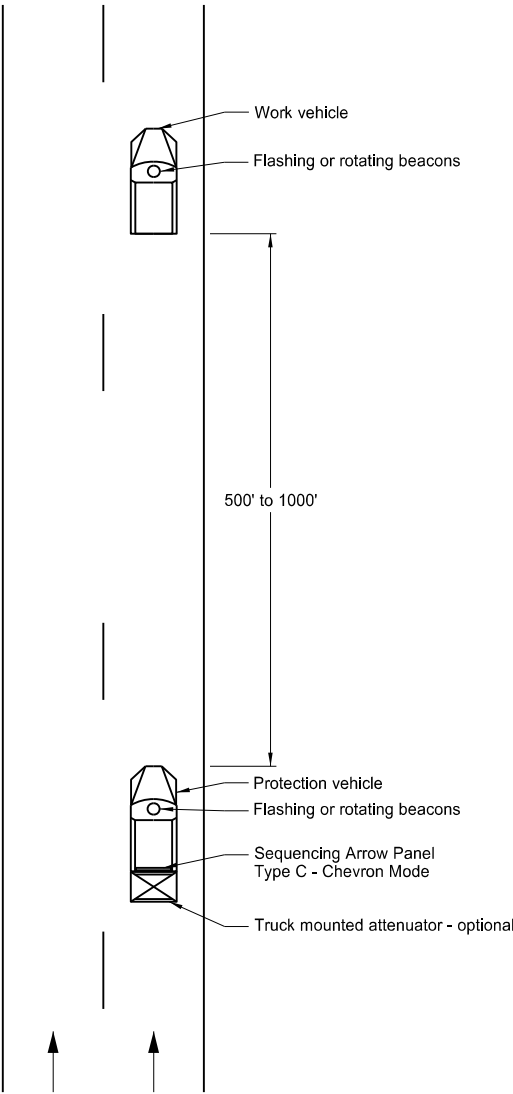


Two Lane, Two Way Roadways



Typical Protection Vehicle

Multilane Roadways



Typical Protection Vehicle

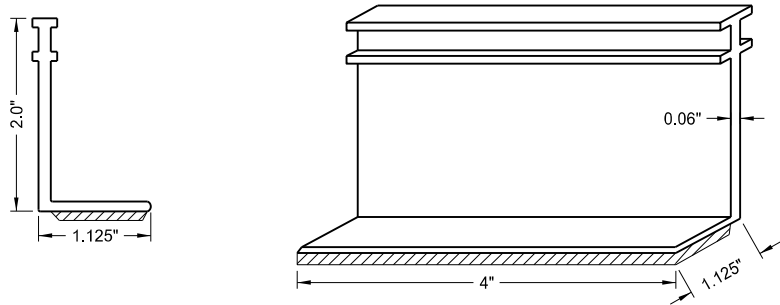
- Notes:
1. Display a 360 degree rotating, flashing, oscillating or strobe light on the working vehicle.
 2. Display a 360 degree rotating, flashing, oscillating or strobe light on the shadow vehicle. Operate a sequencing arrow panel Type C in chevron mode on the shadow vehicle for Multilane Roadway.
 3. Use these layouts during daylight hours and in areas of good visibility only.
 4. Use flagger to protect the work area and warn oncoming traffic for two lane, two way roadway.

NORTH DAKOTA DEPARTMENT OF TRANSPORTATION	
9-25-12	
REVISIONS	
DATE	CHANGE
9-27-17	Updated to active voice
10-03-19	New Design Engr PE Stamp

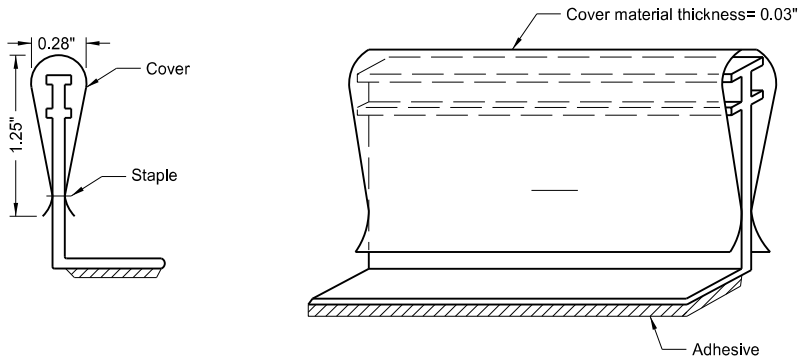
This document was originally issued and sealed by
Kirk J Hoff,
Registration Number
PE- 4683,
on 10/03/19 and the original document is stored at the
North Dakota Department
of Transportation

LANE MARKERS
(Spotting Tab for Seal Projects only)

D-704-3



Marker Body



Marker Body with Protective Cover

Notes:

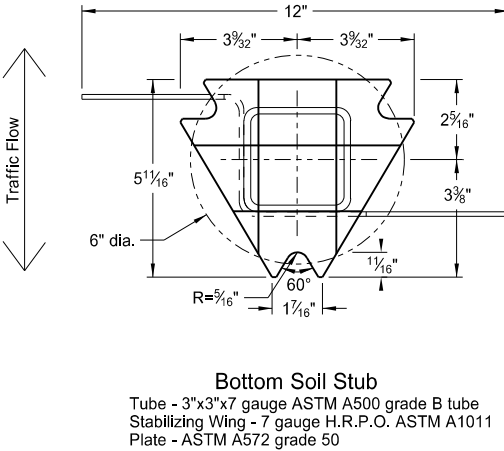
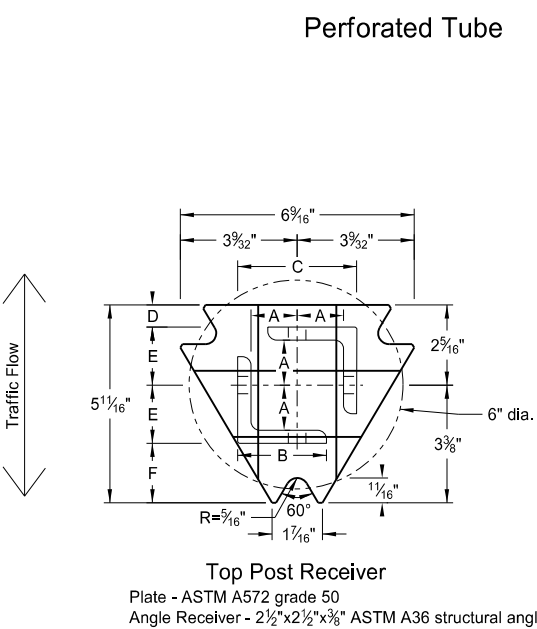
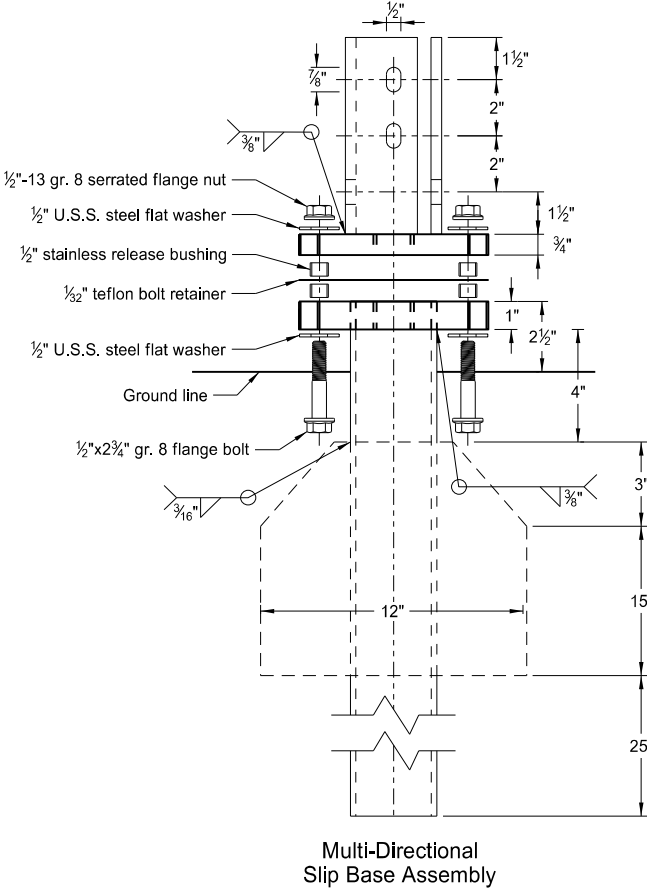
1. Install lane line markers as shown, prior to beginning the seal coat.
2. Attach cover to vertical part of marker so traffic does not cause it to detach, but it can be easily removed manually.
3. Remove protective covers immediately after seal coat is applied.
4. Remove markers after permanent pavement marking is installed.
5. Use marker body and cover manufactured from polyurethane material.
6. Marker types:
Type Y - Yellow body and cover with yellow reflective tape on both sides.
Type W - White body and cover with white reflective tape on one side.
7. Use retrorreflective tape with a minimum reflectance of 1200 candle power per foot-candle per square foot, using a .1 degree observation angle and 0 degree entrance angle.
8. Use adhesive conforming to AASHTO M 237.

NORTH DAKOTA DEPARTMENT OF TRANSPORTATION	
10-3-13	
REVISIONS	
DATE	CHANGE
9-27-17	Updated to active voice
10-03-19	New Design Engr PE Stamp

This document was originally issued and sealed by
Kirk J Hoff,
Registration Number
PE- 4683,
on 10/03/19 and the original document is stored at the
North Dakota Department
of Transportation

Perforated Tube

- Notes:
1. Torque slip base bolts as specified by manufacturer.
 2. Use anchor with 43.9 KSI yield strength and 59.3 KSI tensile strength.
 3. Provide 4" vertical clearance for anchor or breakaway base. Measure the 4"x60" measurement above and below post location and back and ahead of post.
 4. In concrete sidewalk, use same anchor without wings.
 5. Provide more than 7' between the first and fourth posts of a four post sign.

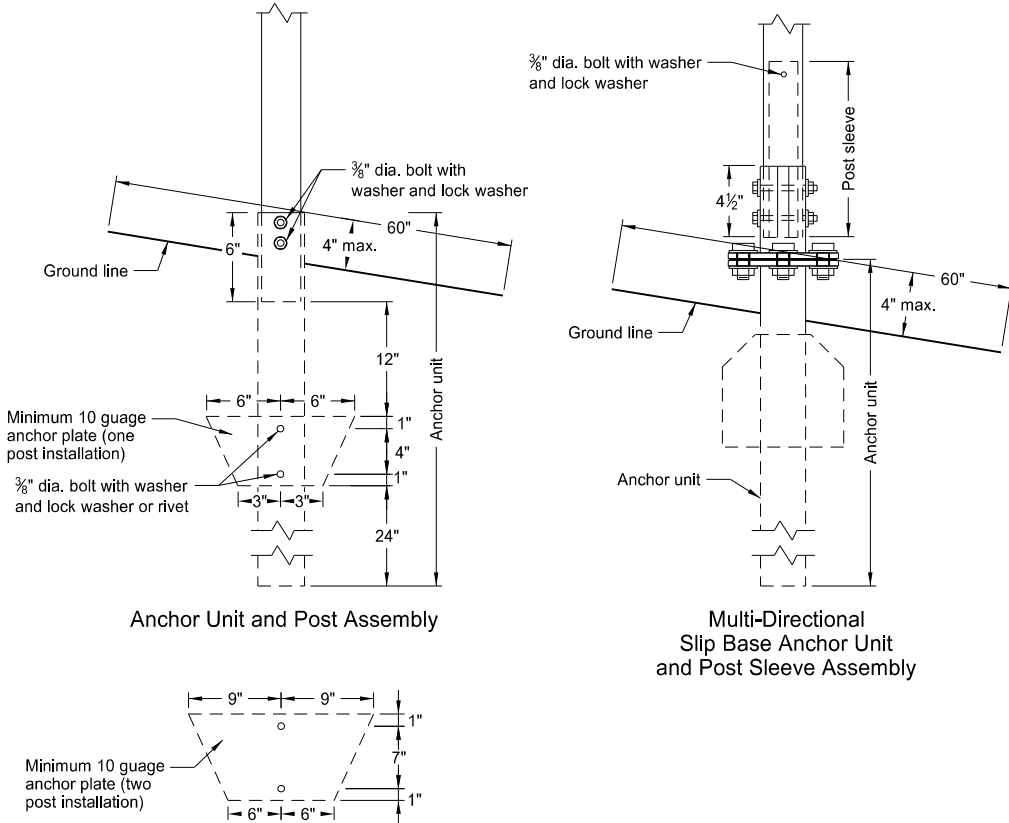


Telescoping Perforated Tube						
Number of Posts	Post Size in.	Wall Thick-ness Gauge	Sleeve Size in.	Wall Thick-ness Gauge	Slip Base	Anchor Size without Slip Base in.
1	2	12			No	2 1/4
1	2 1/4	12			No	2 1/2
1	2 1/2	12			(A)	3
1	2 1/2	10			Yes	
1	2 1/4	12	2	12	Yes	
1	2 1/2	12	2 1/4	12	Yes	
2	2	12			No	2 1/4
2	2 1/4	12			No	2 1/2
2	2 1/2	12			Yes	
2	2 1/2	12			Yes	
2	2 1/4	10	2	12	Yes	
2	2 1/2	12	2 1/4	12	Yes	
3 & 4	2 1/2	12			Yes	
3 & 4	2 1/2	10			Yes	
3 & 4	2 1/2	12	2 1/4	12	Yes	
3 & 4	2 1/4	12	2	12	Yes	
3 & 4	2 1/2	10	2 3/16	10	Yes	

Properties of Telescoping Perforated Tube						
Tube Size in.	Wall Thickness in.	U.S. Standard Gauge	Weight per Foot lbs.	Moment of Inertia in. ⁴	Cross Sec. Area in. ²	Section Modulus in. ³
1 1/2 x 1 1/2	0.105	12	1.702	0.129	0.380	0.172
2 x 2	0.105	12	2.416	0.372	0.590	0.372
2 1/4 x 2 1/4	0.105	12	2.773	0.561	0.695	0.499
2 3/8 x 2 3/8	0.135	10	3.432	0.605	0.841	0.590
2 1/2 x 2 1/2	0.105	12	3.141	0.804	0.803	0.643
2 1/2 x 2 1/2	0.135	10	4.006	0.979	1.010	0.785

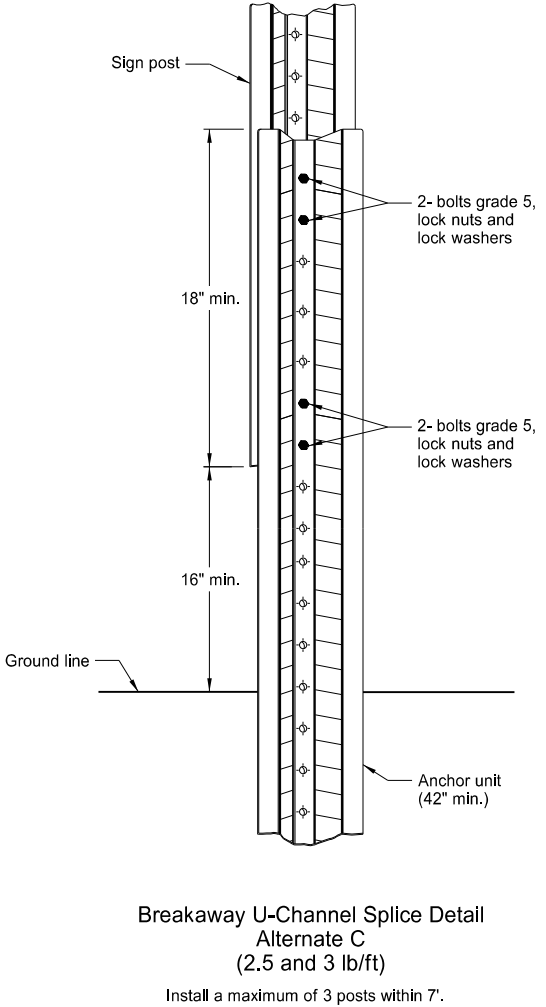
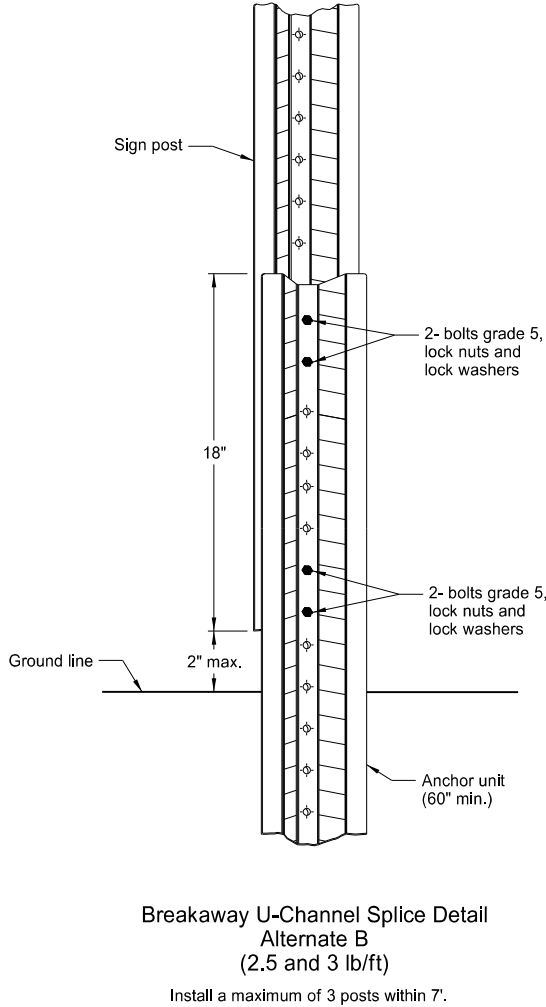
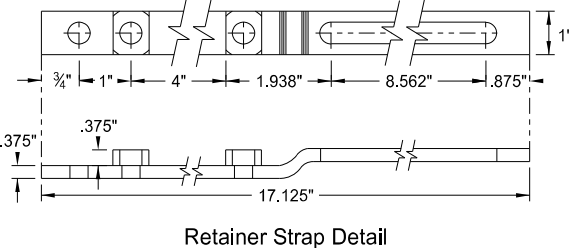
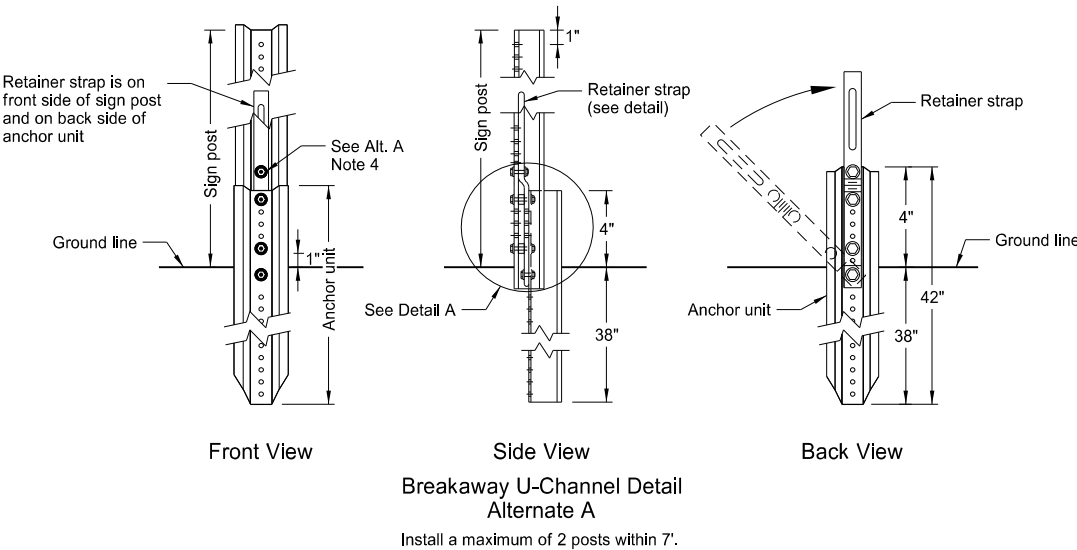
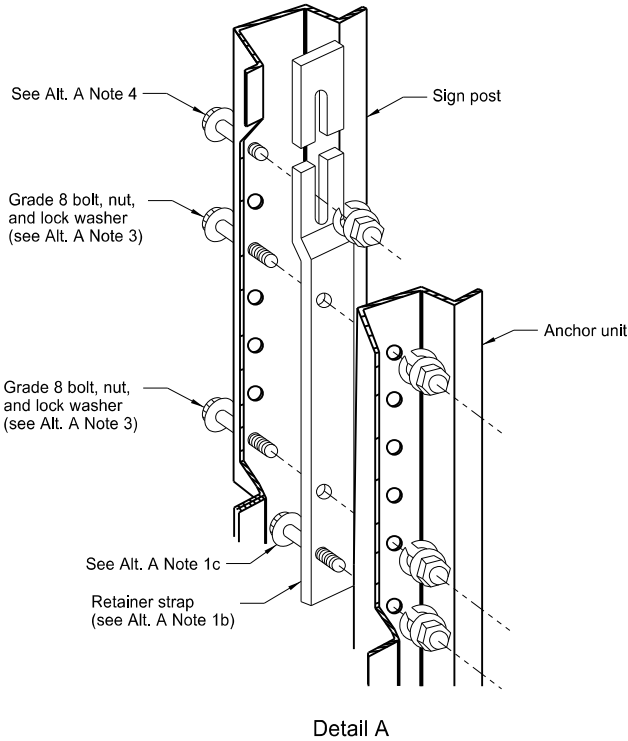
Top Post Receiver Data Table						
Square Post Sizes (B)	A	B	C	D	E	F
2 3/16"x10 ga.	1 5/16"	2 1/2"	3 1/2"	2 5/32"	1 33/64"	1 7/8"
2 1/2"x10 ga.	1 3/32"	2 1/2"	3 5/16"	5/8"	1 21/32"	1 3/4"

- (A) Use breakaway base when support is placed in weak soils. Engineer determines if soils are weak.
- (B) For additional wind load, insert the 2 3/8"x10 ga. into 2 1/2"x10 ga.



NORTH DAKOTA DEPARTMENT OF TRANSPORTATION		This document was originally issued and sealed by Kirk J Hoff, Registration Number PE- 4683, on 10/03/19 and the original document is stored at the North Dakota Department of Transportation
2-28-14		
REVISIONS		
DATE	CHANGE	
9-27-17 10-03-19	Updated to active voice New Design Engr PE Stamp	

U-Channel Post



Alternate A Steps of Installation:

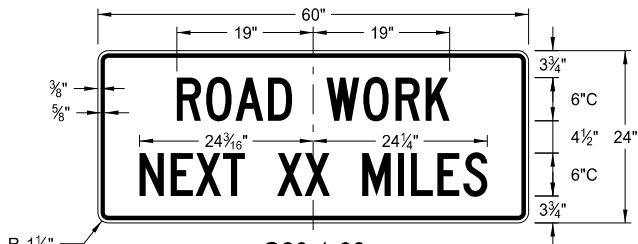
- a) Drive anchor unit to within 12" of ground level.
b) Establish proper assembly by lining up bottom hole of retainer strap with 6th hole from the top of the anchor unit.
c) Assemble strap to back of anchor unit using 5/16"x2" bolt, lock washer and nut.
d) Rotate strap 90° to left.
- a) Drive anchor unit to 4" above ground.
b) Rotate strap to vertical position.
- a) Place 5/16"x2" bolt, lock washer and nut in bottom of sign post to facilitate alignment of sign post with proper hole in anchor unit.
b) Alternately tighten two connector bolts.
- Complete assembly by tightening 5/16"x2" bolt (this fastens sign post to retainer strap).
- Properly nest base post, strap, and sign post. Proper nesting occurs when all flat surfaces of the base post, strap, and sign post at the bolts have full contact across the entire width.

NORTH DAKOTA DEPARTMENT OF TRANSPORTATION	
2-28-14	
REVISIONS	
DATE	CHANGE
9-27-17 10-03-19	Updated to active voice New Design Engr PE Stamp

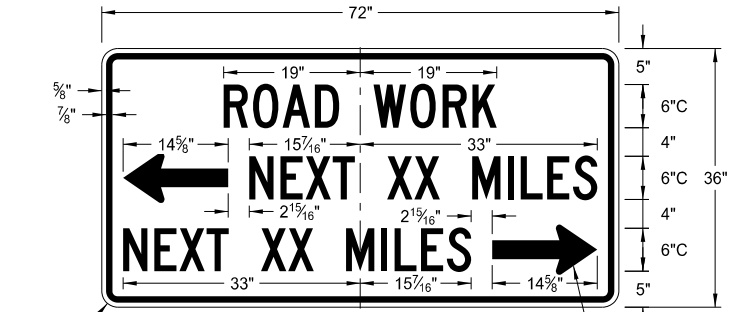
This document was originally issued and sealed by
Kirk J Hoff,
Registration Number
PE- 4683,
on 10/03/19 and the original document is stored at the
North Dakota Department
of Transportation

CONSTRUCTION SIGN DETAILS
TERMINAL AND GUIDE SIGNS

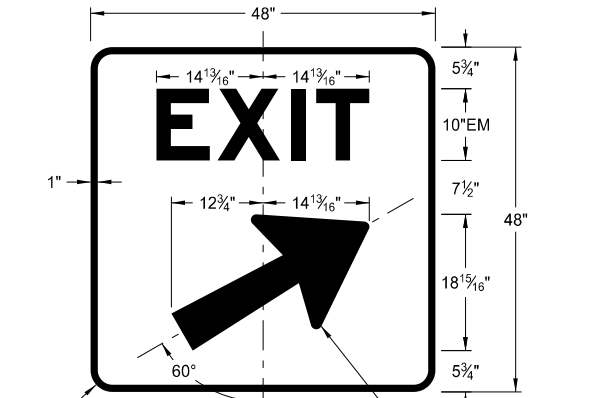
D-704-9



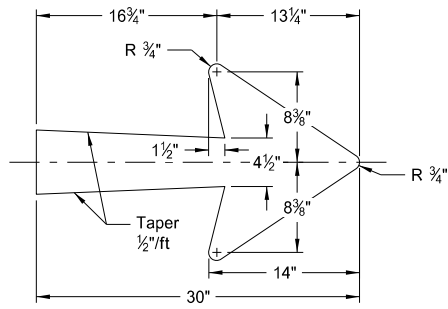
G20-1-60
Legend: black (non-refl)
Background: orange



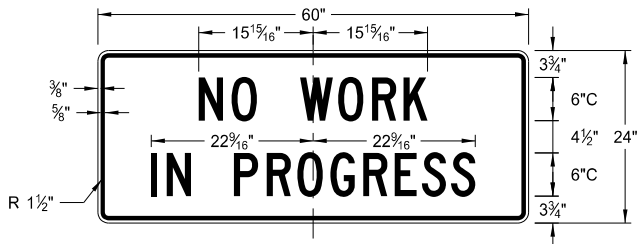
G20-50a-72
Legend: black (non-refl)
Background: orange



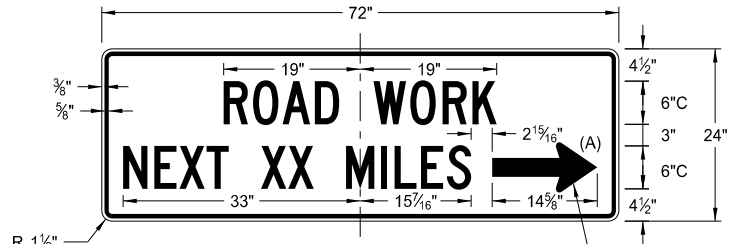
E5-1(L or R)-48
Legend: white
Background: green (orange optional)



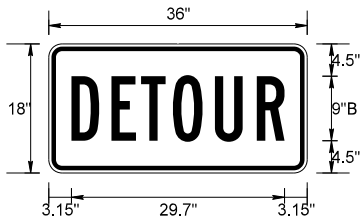
E5-1-48



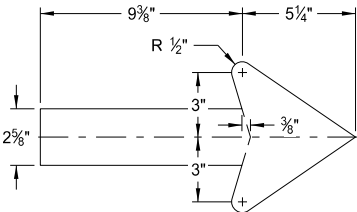
G20-1b-60
Legend: black (non-refl)
Background: orange



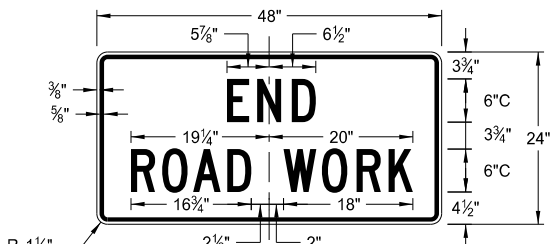
G20-52a-72
Legend: black (non-refl)
Background: orange



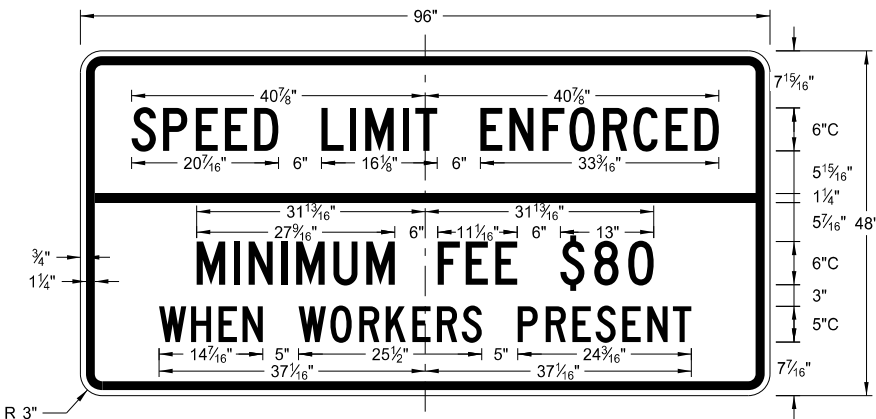
M4-8-36
Legend: black (non-refl)
Background: orange



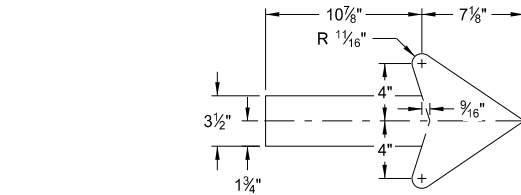
G20-50a-72
G20-52a-72



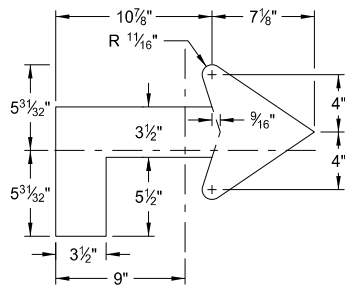
G20-2-48
Legend: black (non-refl)
Background: orange



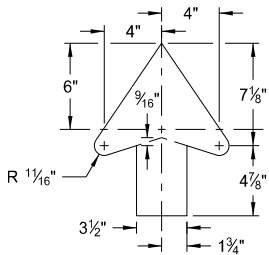
G20-55-96
Legend: black (non-refl)
Background: orange



M4-9(L or R)-30
Right or Left



M4-9(L or R)-30
Advanced Right or Left



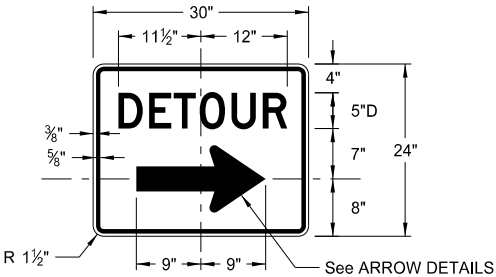
M4-9-30
Straight

ARROW DETAILS

NOTES:
(A) Arrow may be right or left of the legend to indicate construction to the right or left.

NORTH DAKOTA DEPARTMENT OF TRANSPORTATION	
8-13-13	
REVISIONS	
DATE	CHANGE
8-17-17 10-03-19	Added sign & background color New Design Engineer PE Stamp

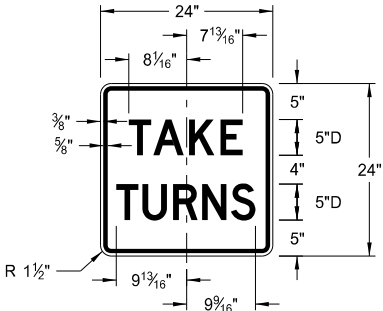
This document was originally issued and sealed by
Kirk J Hoff,
Registration Number
PE- 4683,
on 10/03/19 and the original document is stored at the
North Dakota Department
of Transportation



M4-9(L or R)-30 &
M4-9-30
Legend: black (non-refl)
Background: orange

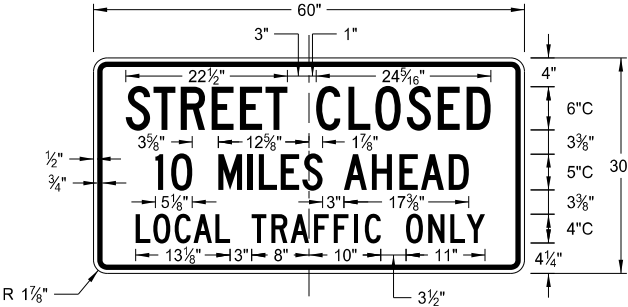
CONSTRUCTION SIGN DETAILS
REGULATORY SIGNS

D-704-10



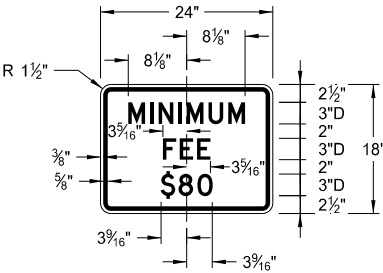
R1-50P-24

Legend: black (non-refl)
Background: white



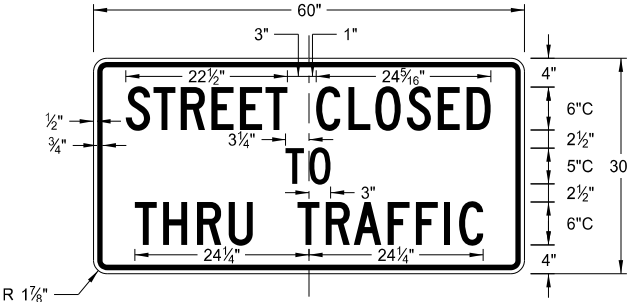
R11-3c-60

Legend: black (non-refl)
Background: white



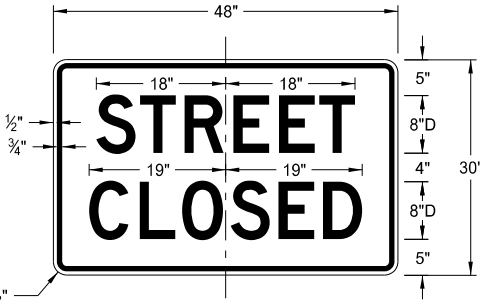
R2-1aP-24

Legend: black (non-refl)
Background: white



R11-4a-60

Legend: black (non-refl)
Background: white



R11-2a-48

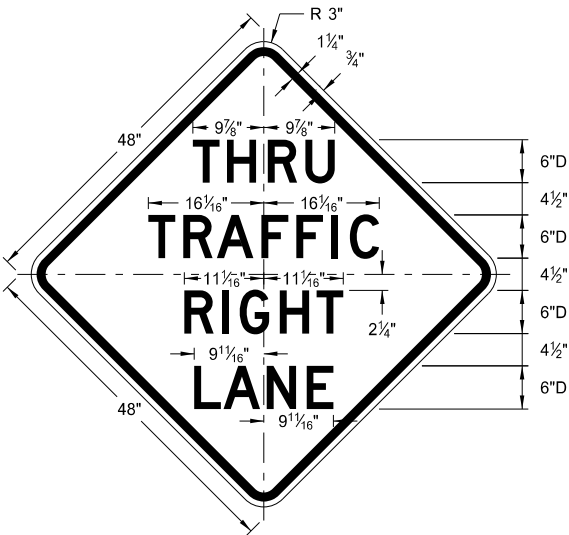
Legend: black (non-refl)
Background: white

NORTH DAKOTA DEPARTMENT OF TRANSPORTATION	
8-13-13	
REVISIONS	
DATE	CHANGE
8-17-17	Revised sign number
10-03-19	New Design Engineer PE Stamp

This document was originally
issued and sealed by
Kirk J Hoff,
Registration Number
PE- 4683,
on 10/03/19 and the original
document is stored at the
North Dakota Department
of Transportation

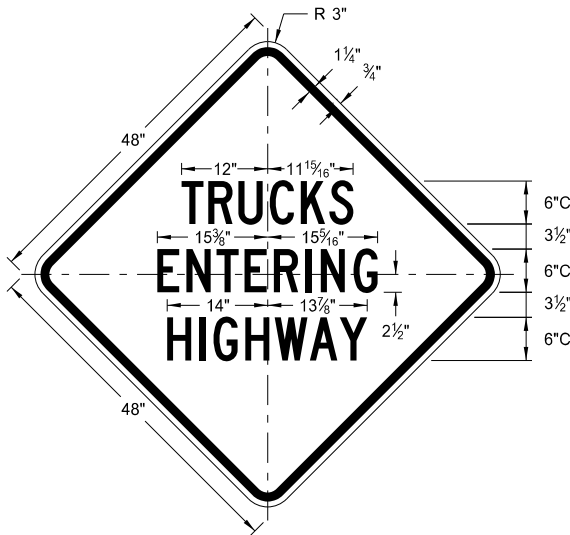
CONSTRUCTION SIGN DETAILS
WARNING SIGNS

D-704-11



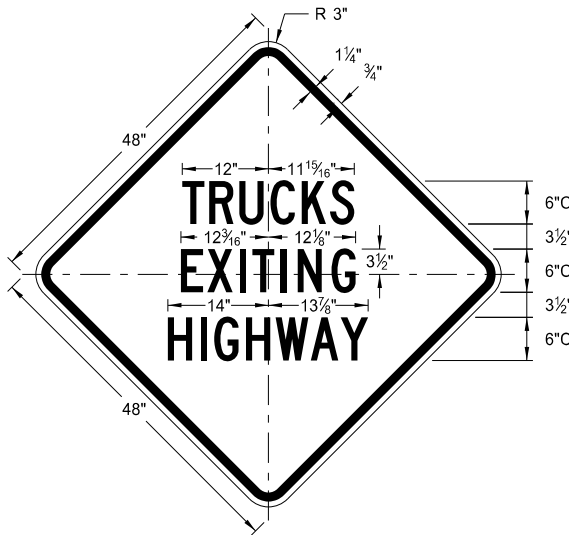
W5-8-48

Legend: black (non-refl)
Background: orange



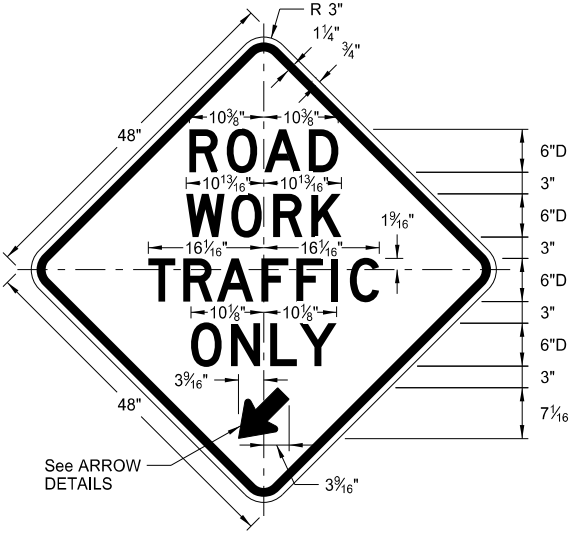
W8-53-48

Legend: black (non-refl)
Background: orange



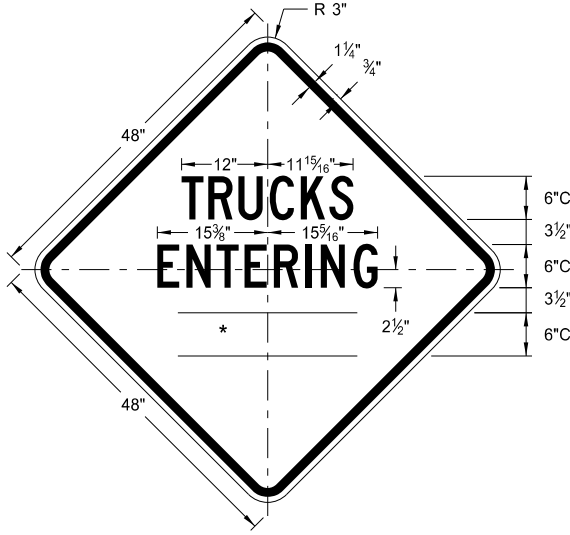
W8-56-48

Legend: black (non-refl)
Background: orange



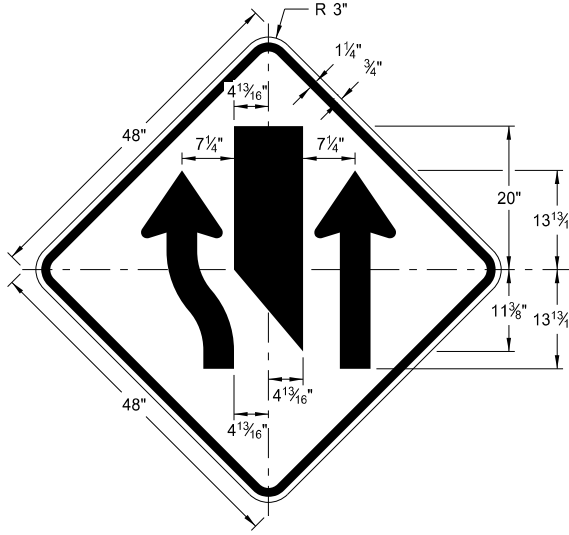
W5-9-48

Legend: black (non-refl)
Background: orange



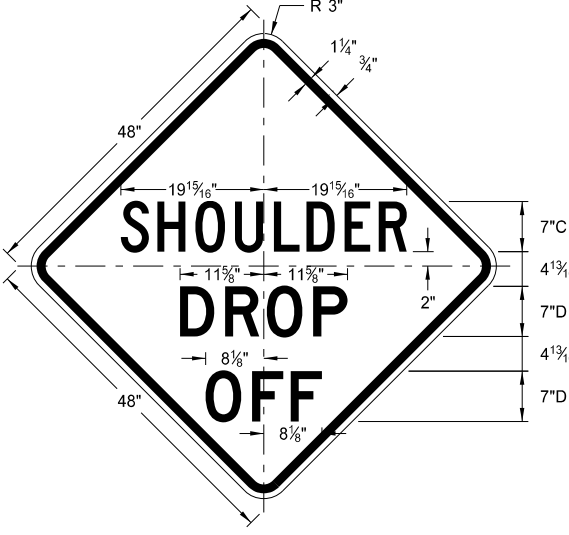
W8-54-48

Legend: black (non-refl)
Background: orange



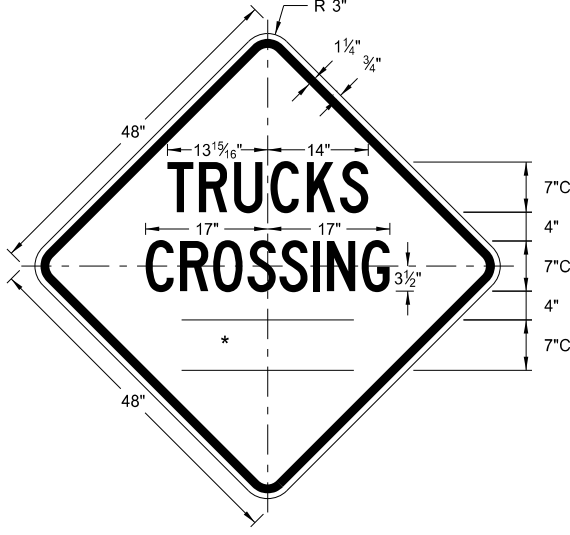
W9-3a-48

Legend: black (non-refl)
Background: orange



W8-9a-48

Legend: black (non-refl)
Background: orange

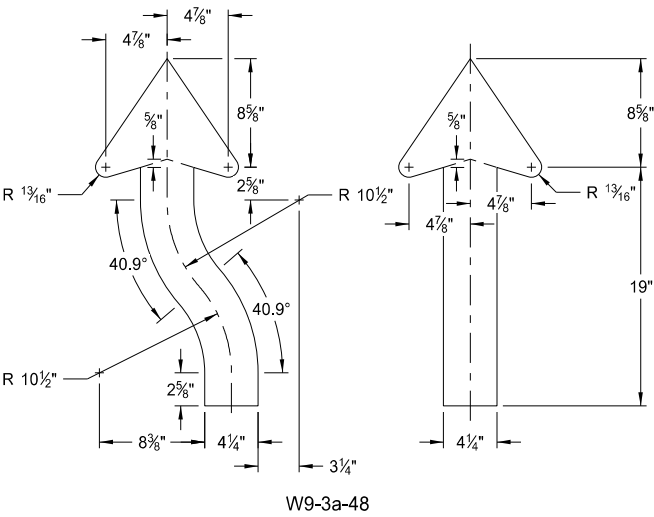
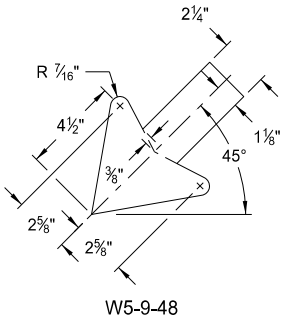


W8-55-48

Legend: black (non-refl)
Background: orange

WORD	LETTER SPACING
AHEAD	Standard
200 FT	Standard
350 FT	Standard
500 FT	Standard
1000 FT	Reduce 40%
1500 FT	Reduce 40%
1/2 MILE	Reduce 50%
1 MILE	Standard

* DISTANCE MESSAGES



ARROW DETAILS

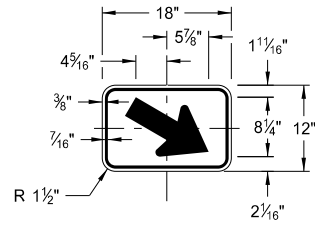
NORTH DAKOTA DEPARTMENT OF TRANSPORTATION	
8-13-13	
REVISIONS	
DATE	CHANGE
8-17-17	Updated sign number
5-31-18	Revised sign and arrow details
10-03-19	New Design Engineer PE Stamp

This document was originally issued and sealed by
Kirk J Hoff,
Registration Number
PE- 4683,
on 10/03/19 and the original document is stored at the
North Dakota Department
of Transportation

CONSTRUCTION SIGN DETAILS
WARNING SIGNS

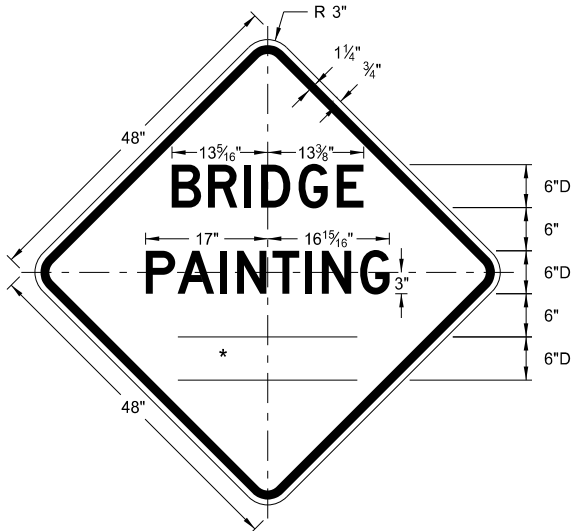
WORD	LETTER SPACING
AHEAD	Standard
200 FT	Standard
350 FT	Standard
500 FT	Standard
1000 FT	Reduce 40%
1500 FT	Reduce 40%
½ MILE	Reduce 50%
1 MILE	Standard

* DISTANCE MESSAGES



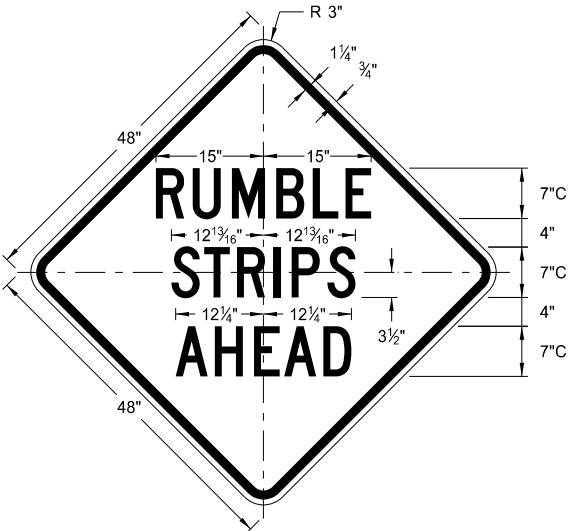
W16-7aP-18

Legend: black (non-refl)
Background: orange



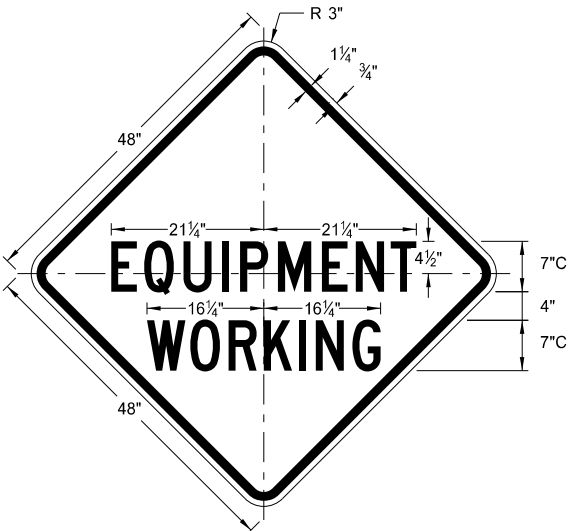
W21-50-48

Legend: black (non-refl)
Background: orange



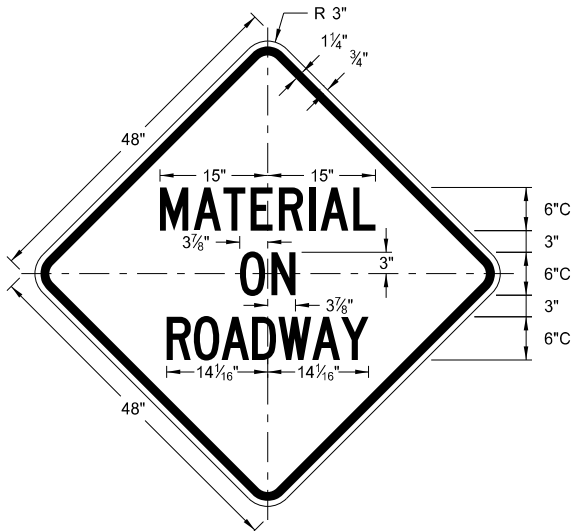
W21-53-48

Legend: black (non-refl)
Background: orange



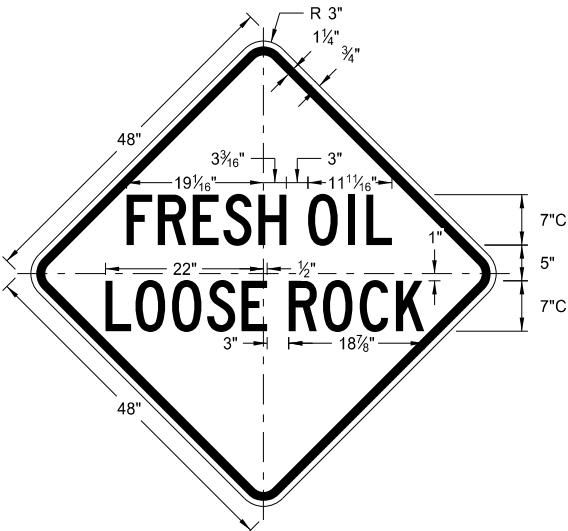
W20-51-48

Legend: black (non-refl)
Background: orange



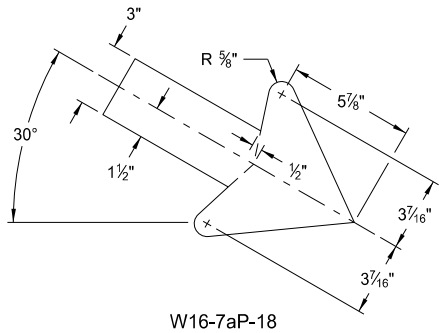
W21-51-48

Legend: black (non-refl)
Background: orange

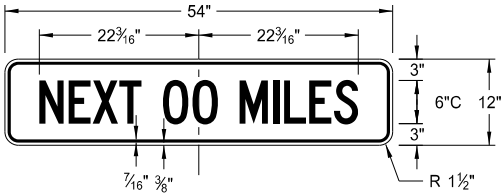


W22-8-48

Legend: black (non-refl)
Background: orange

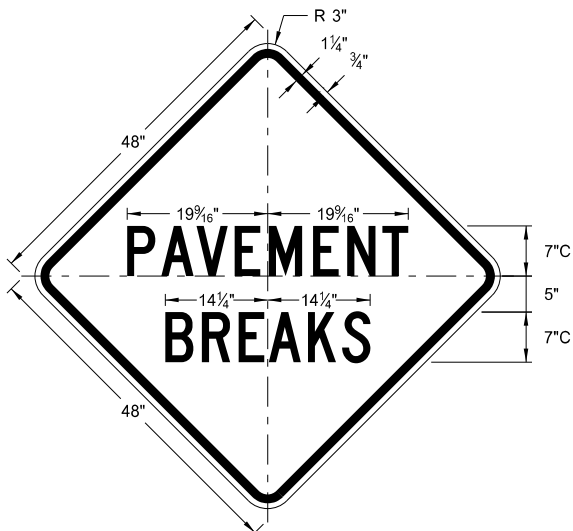


W16-7aP-18



W20-52P-54

Legend: black (non-refl)
Background: orange

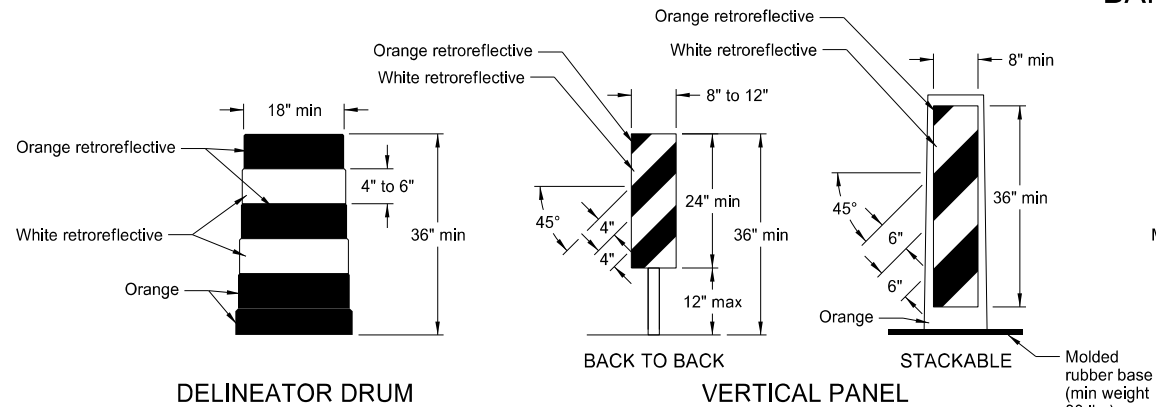


W21-52-48

Legend: black (non-refl)
Background: orange

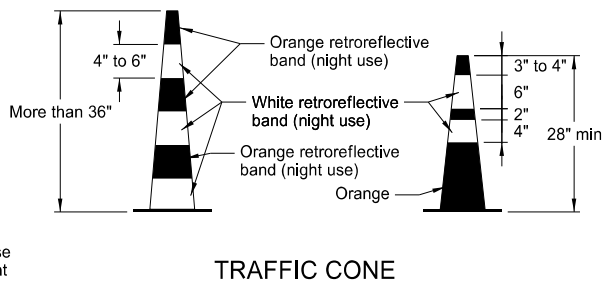
NORTH DAKOTA DEPARTMENT OF TRANSPORTATION		This document was originally issued and sealed by Kirk J Hoff, Registration Number PE- 4683, on 11/1/19 and the original document is stored at the North Dakota Department of Transportation
5-31-18		
REVISIONS		
DATE	CHANGE	
11-01-19	Added details for sign W16-7aP-18.	

BARRICADE AND CHANNELIZING DEVICE DETAILS



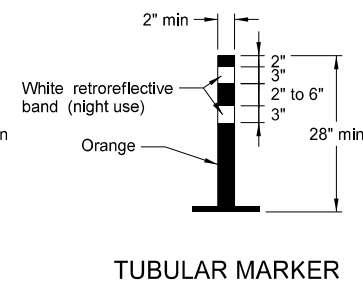
DELINEATOR DRUM

Provide horizontal, circumferential, alternating orange and white retroreflective stripes 4" to 6" wide for drum markings. Use a minimum of two orange and two white stripes with the top stripe being orange for each drum. Do not exceed 3' nonretroreflectORIZED spaces between the horizontal orange and white stripes. Avoid placement of stripes on drum ribs or indentations. Use closed top drums that will not allow collection of debris. Do not place ballast on the top of drum.



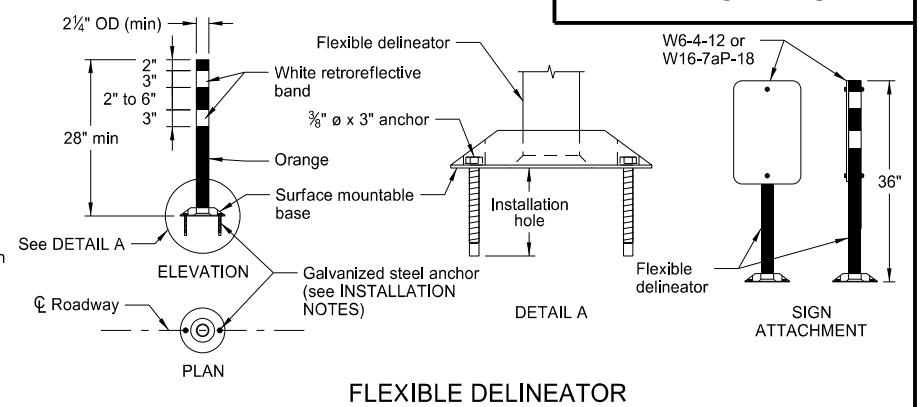
TRAFFIC CONE

Provide retroreflectorization of cones more than 36" in height by alternating orange and white retroreflective stripes. Use a minimum of two orange and two white stripes for each cone with the top stripe being orange. Use maximum 3" nonretroreflectorized space between the orange and white stripes.



TUBULAR MARKER

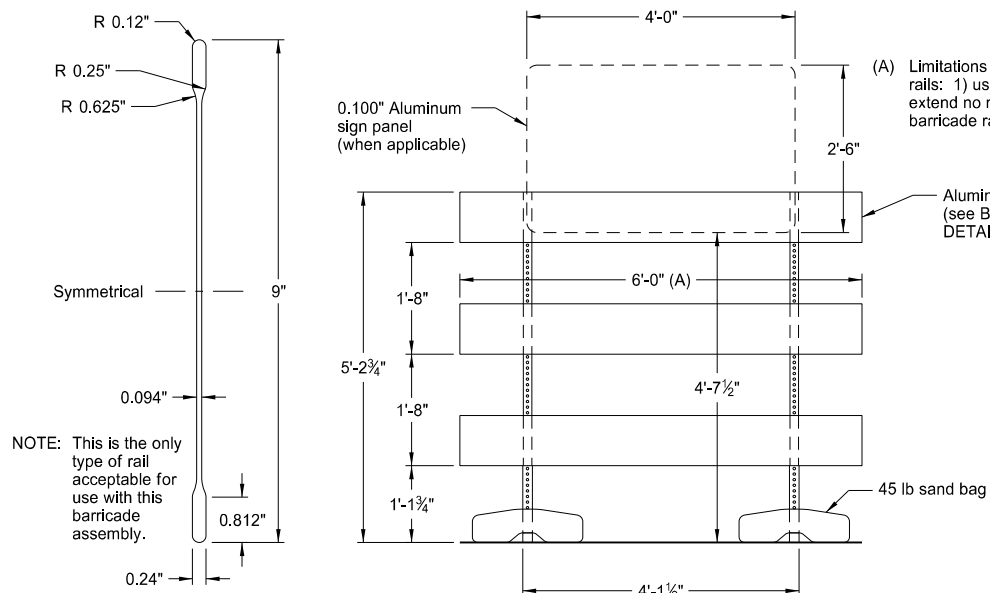
Provide retroreflectorization of tubular markers more than 42" in height by alternating four 4" to 6" wide orange and white stripes with the top stripe being orange.



FLEXIBLE DELINEATOR

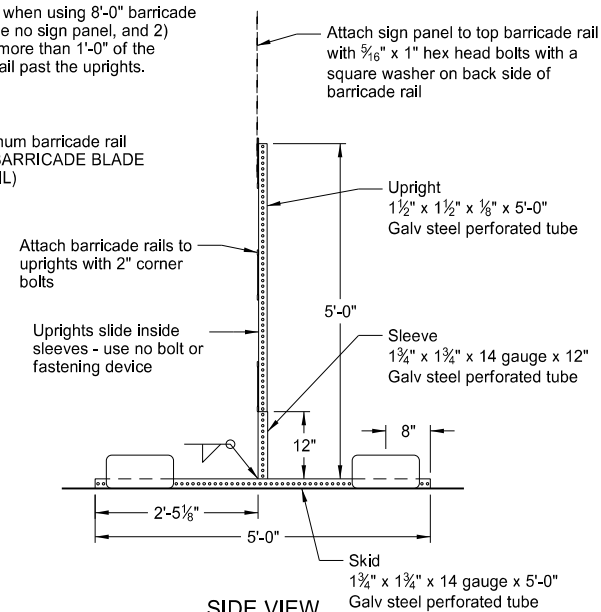
INSTALLATION NOTES:

1. Drill installation holes to diameter and depth required by manufacturer's specifications.
2. For removal, remove anchors and fill installation hole with an epoxy designed to bond to pavement surface.
3. In lieu of bolted down base, use an 8" x 8" butyl pad or hot melt butyl. Remove butyl as close as possible to pavement surface.

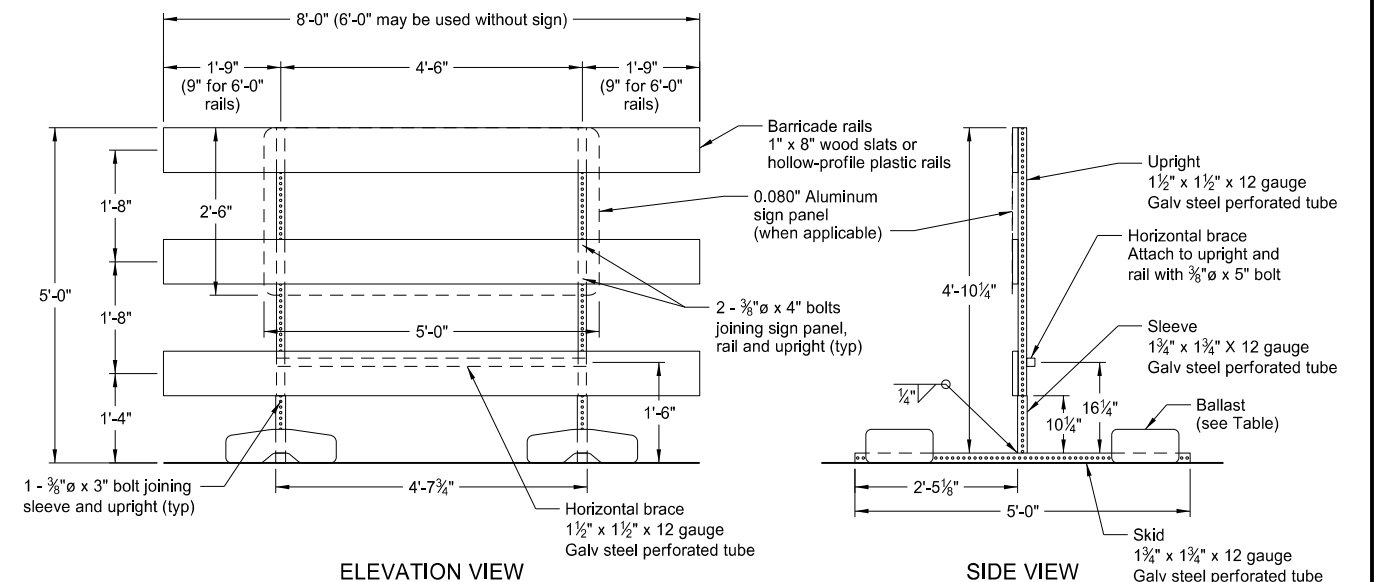


BARRICADE BLADE DETAIL

NOTE: This is the only type of rail acceptable for use with this barricade assembly.



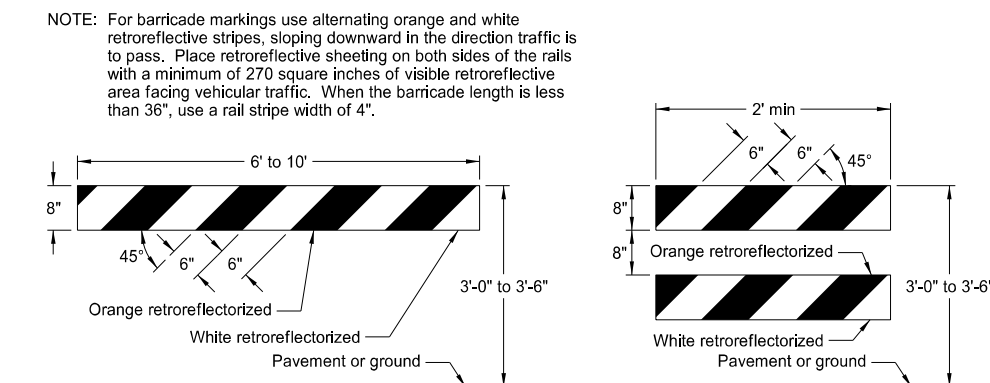
SIDE VIEW



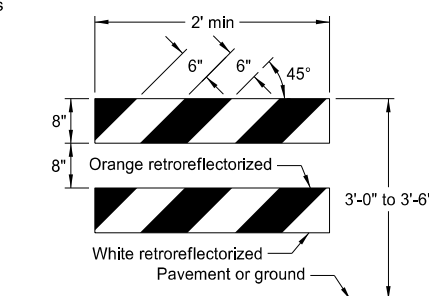
ELEVATION VIEW

SIDE VIEW

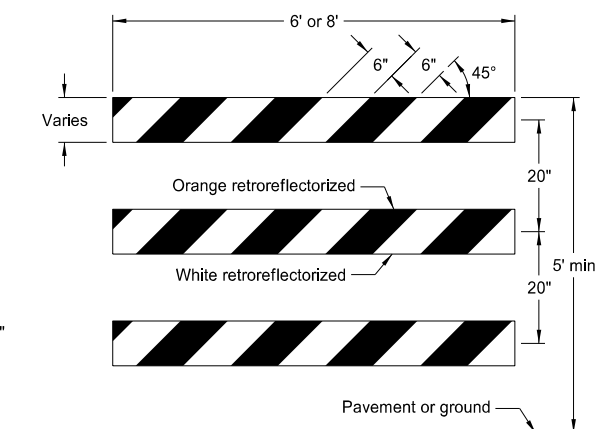
BARRICADE ASSEMBLY DETAIL (Wood or Plastic Rails)



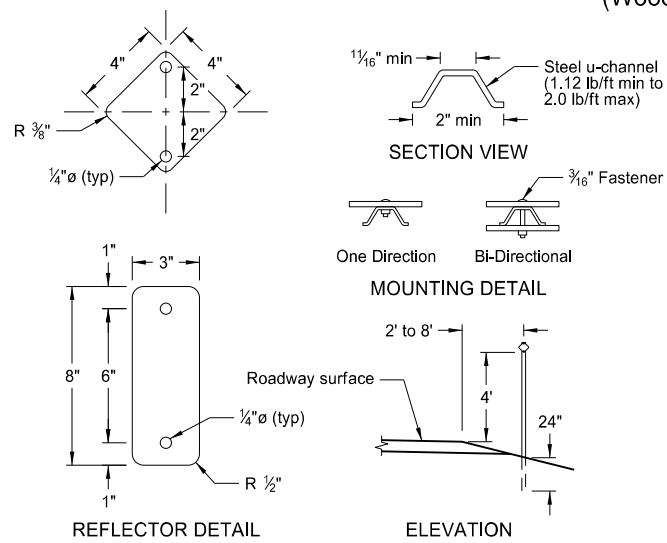
TYPE | BARRICADE



TYPE II BARRICADE



TYPE III BARRICADE



DELINEATORS

MINIMUM BALLAST (For each side of barricade support)	
Without Sign	4 - 25 lb sandbags
With Sign	6 - 25 lb sandbags

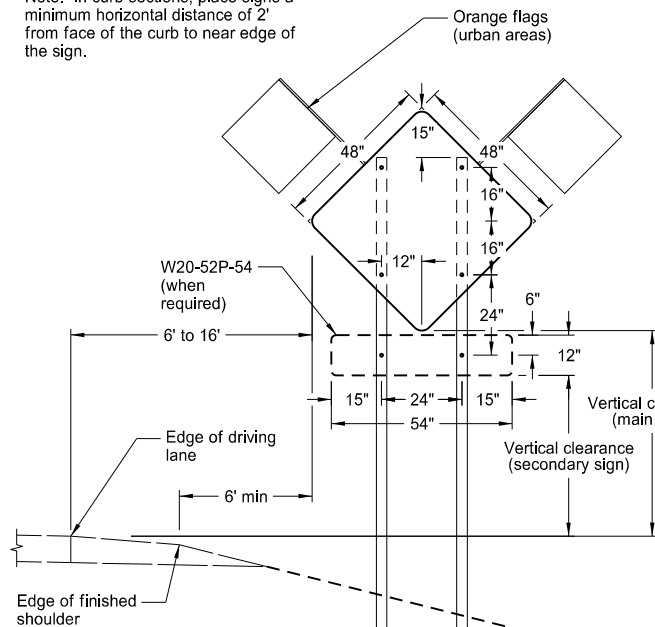
Note: Number of sandbags based on a wind speed of 55 MPH. Sandbags assumed to be placed at or near the ends of the skids.

NORTH DAKOTA DEPARTMENT OF TRANSPORTATION	
10-3-13	
REVISIONS	
DATE	CHANGE
9-27-17 11-01-19	Updated to active voice Revised details for Flexible Delineator

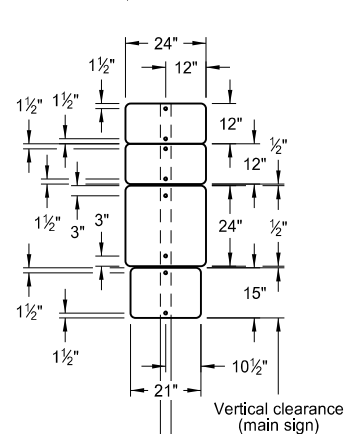
This document was originally issued and sealed by
Kirk J Hoff,
Registration Number
PE-4683,
on 11/1/19 and the original document is stored at the
North Dakota Department
of Transportation

CONSTRUCTION SIGN PUNCHING AND MOUNTING DETAILS

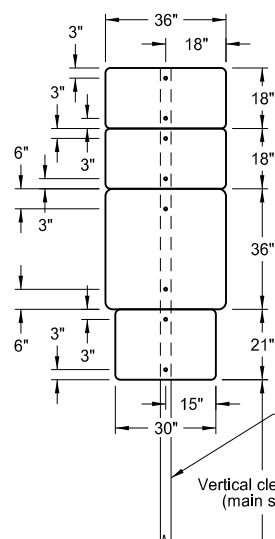
Note: In curb sections, place signs a minimum horizontal distance of 2' from face of the curb to near edge of the sign.



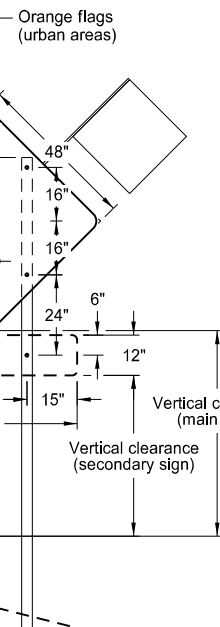
TYPICAL SECTION
(48" x 48" diamond warning sign shown)



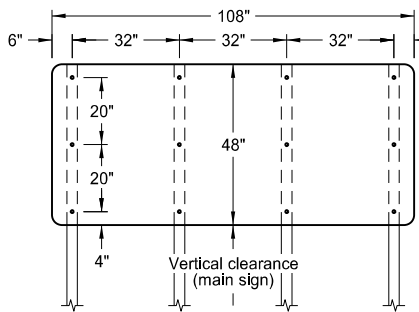
24" x 24"
ROUTE MARKER
ASSEMBLY



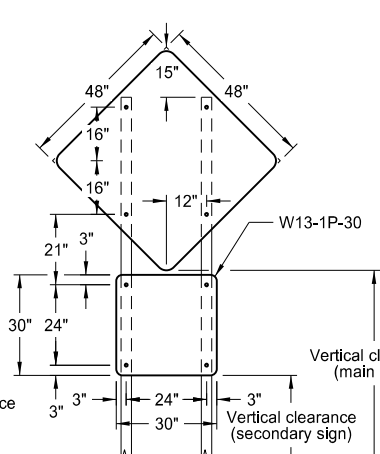
36" x 36"
ROUTE MARKER
ASSEMBLY



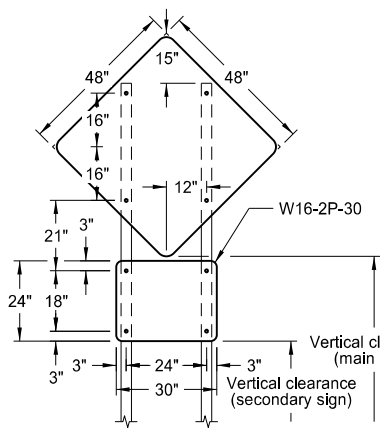
18" x 18"
DIAMOND SIGN



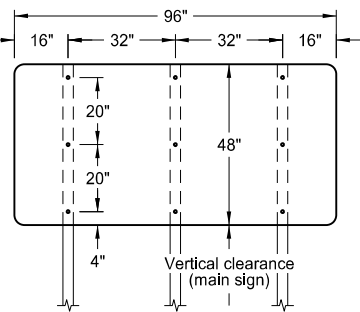
108" x 48" SIGN



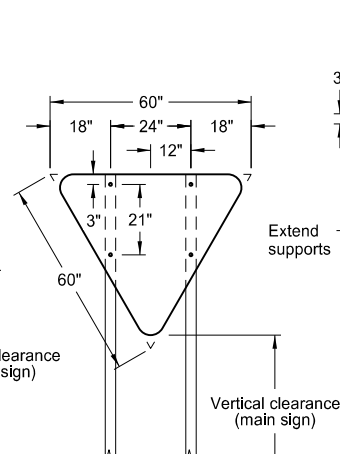
48" x 48" DIAMOND SIGN
(with 30" x 30" secondary sign)



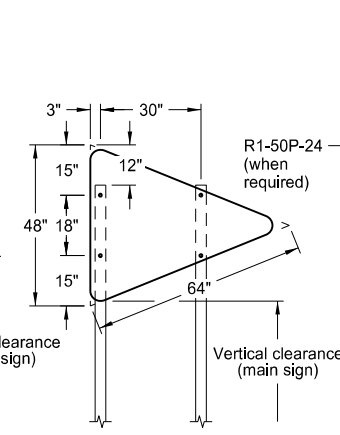
48" x 48" DIAMOND SIGN
(with 30" x 24" secondary sign)



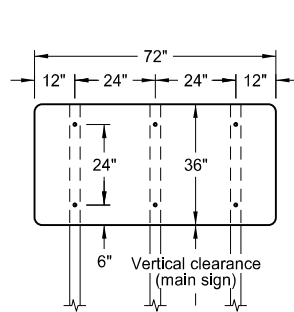
96" x 48" SIGN



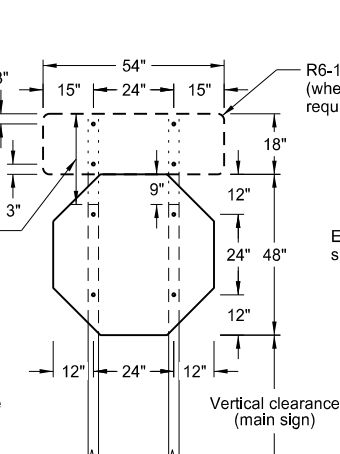
R1-2-60 - YIELD SIGN



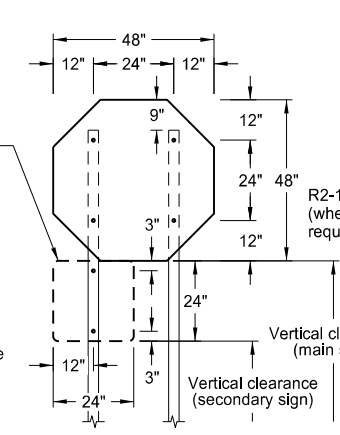
W14-3-64 - PENNANT SIGN



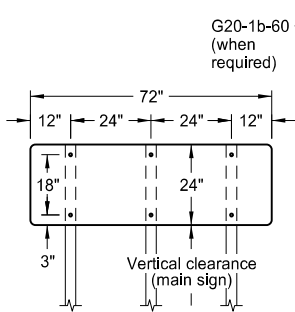
72" x 36" SIGN



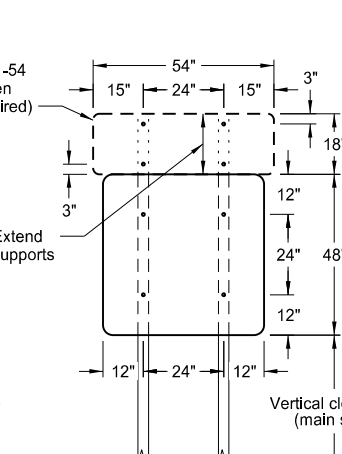
R1-1-48 - STOP SIGN
(with R6-1-54 sign as required)



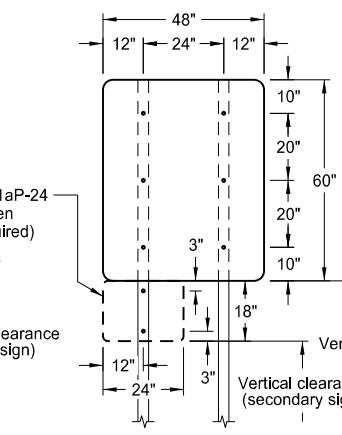
R1-1-48 - STOP SIGN
(with R1-50P-24 sign as required)



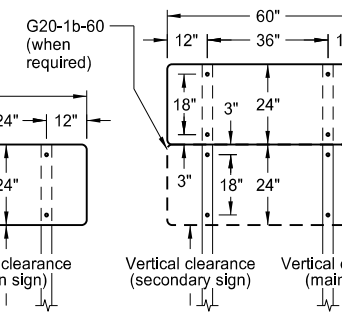
72" x 24" SIGN



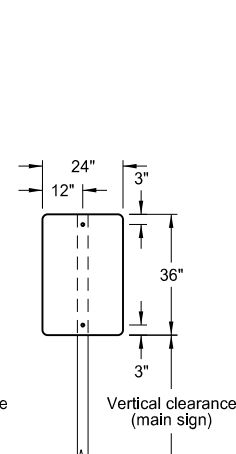
48" x 48" SIGN
(with R6-1-54 sign as required)



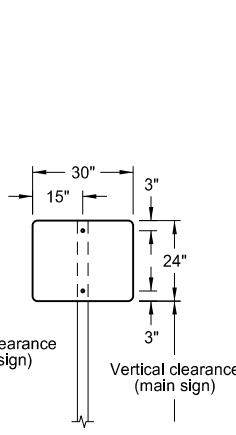
48" x 48" SIGN
(with R2-1aP-24 sign as required)



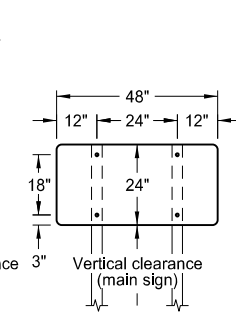
60" x 24" SIGN



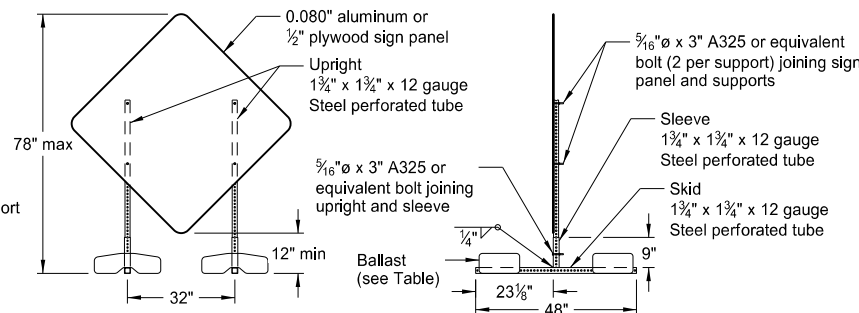
24" x 36" SIGN



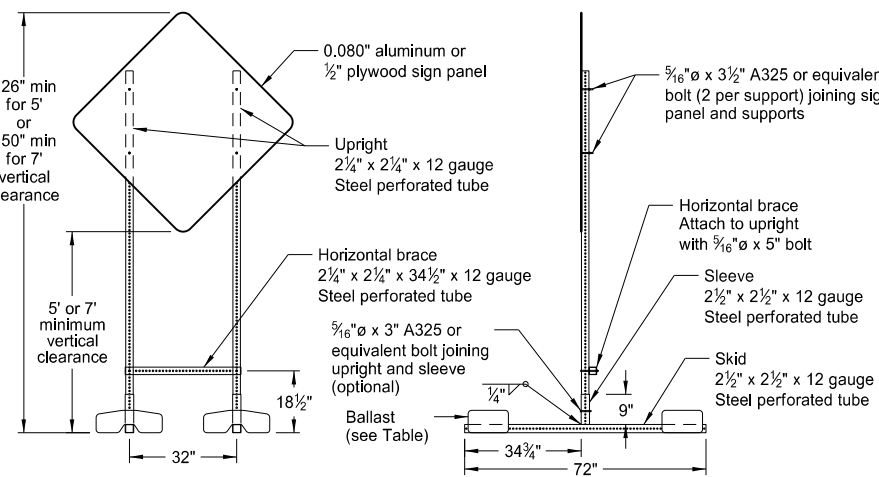
30" x 24" SIGN



48" x 24" SIGN



PORTABLE SIGN SUPPORT
LOW-MOUNTING HEIGHT



PORTABLE SIGN SUPPORT
HIGH-MOUNTING HEIGHT

NOTES:

1. Sign Supports: Galvanize or paint supports. Minimum post sizes are 2.5 lb/ft u-channel or 2" x 2" x 12 gauge steel perforated tube, except where noted. When installing signs on u-channel, minimum post size for assemblies containing a secondary sign is 3.0 lb/ft. Post sizes based on a wind speed of 55 MPH.

Place signs over 50 square feet on 2½" x 2½" perforated tube supports as a minimum.

Do not attach guy wires to sign supports. Attach wind beams behind sign panels when used with u-posts.
2. Sign Panels: Provide sign panels made of 0.100" aluminum, ½" plywood, or other approved material, except where noted. Punch all holes round for ⅝" bolts.
3. Alternate Messages: Install and remove alternate message signs on reflectorized plate (without borders) as required. (i.e. "Left" and "Right" message on lane closure sign)
4. Route Marker Auxiliary Signs: Provide route marker auxiliary signs, such as the cardinal direction and directional arrows, with a background and legend that match the route marker they are used with:

Interstate - white legend on blue background
Interstate Business Loop - white legend on green background
US and State - black legend on white background
County - yellow legend on blue background

5. Vertical Clearance: Install signs with a vertical clearance of 5'-0" (see TYPICAL SECTION.). In areas where parking or pedestrian movements are likely or the view of the sign may be obstructed, install signs with a vertical clearance of 7'-0" from the top of the curb or from the near edge of the driving lane in absence of a curb.

The vertical clearance to secondary signs is 1'-0" less than the vertical clearance stated above.

Provide a minimum clearance of 7'-0" from the ground at the post for signs with an area exceeding 50 square feet.

6. Portable Signs: Provide portable signs that meet the vertical clearance stated above when it is necessary to place signs within the pavement surface.

Use of low-mounting height (minimum 12" vertical clearance) portable signs for 5 days or less, is allowed as long as the view of the sign is not obstructed. Time delays caused by unforeseen circumstances, such as equipment breakdown, rain, subgrade failures, etc., will not accrue towards the 5 day period. Use of R9-8 through R9-11a series, W1-6 through W1-8 series, M4-10, and E5-1 is allowed for longer than 5 days.

Restrict signs mounted on portable sign supports shown in the LOW-MOUNTING HEIGHT and HIGH-MOUNTING HEIGHT details to a maximum surface area of 16 square feet.

MINIMUM BALLAST
(For each side of sign support base)

Sign Panel Mounting Height (ft)	Number of 25 lb sandbags for 4' x 4' sign panel
1'	6
5'	8
7'	10

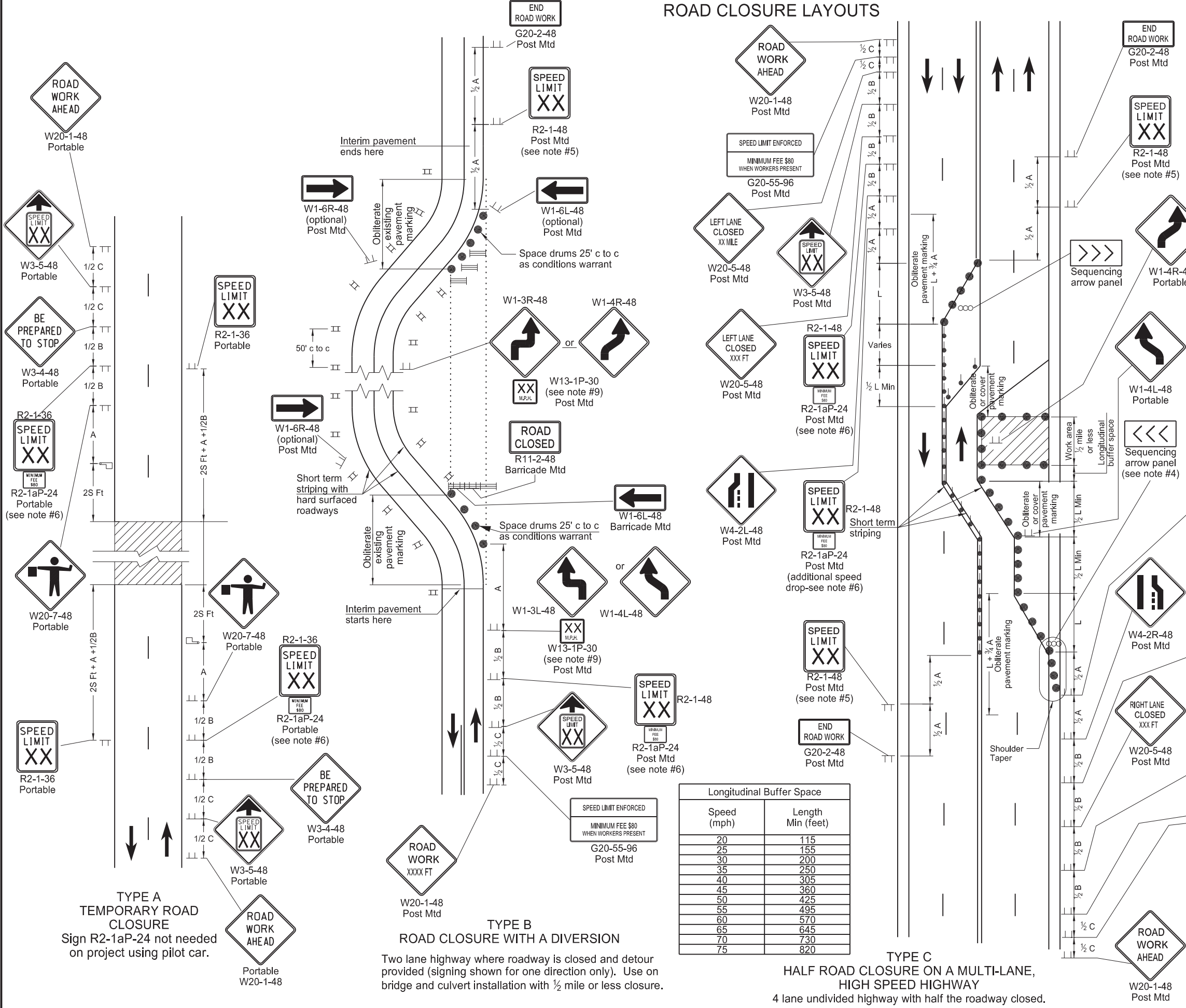
Note: The number of sandbags are based on a wind speed of 55 MPH. Place sandbags at or near the ends of skids.

NORTH DAKOTA DEPARTMENT OF TRANSPORTATION	
10-4-13	
REVISIONS	
DATE	CHANGE
11-14-13	Revised Note 6
9-27-17	Updated to active voice
11-01-19	Revised 60"x24" sign detail

This document was originally issued and sealed by

Kirk J Hoff,
Registration Number
PE-4683,
on 11/1/19 and the original document is stored at the North Dakota Department of Transportation

ROAD CLOSURE LAYOUTS



- Notes:
- Variables
 - S = Numerical value of speed limit or 85th percentile.
 - W = The width of taper in feet.
 - L = Minimum length of taper, $S \times W$ for freeways, expressways, and other roads with speeds of 45 mph or greater, or $W \times S^2/60$ for urban, residential, and other streets with speeds of 40 mph or less.
 - Place barricades on moveable assemblies and signs on portable assemblies when located on roadway.
 - Place delineator drums, barricades or cones for tapering traffic at dimension "S" and for tangents space at 2 times dimension "S".
 - Place Sequencing Arrow Panels at the beginning of the taper when possible. Where shoulder width does not provide sufficient room, move the panel closer to the work area and place on roadway surface. See Shoulder Closure Standard Drawing.
 - Use Type A on roadways with slow moving traffic speeds and low volume (25 mph or less and 750 ADT or less).
 - Use Type B on roadways with moderate traffic speeds and volumes (40 mph or less and 5000 ADT or less).
 - Use Type C on roadways with high traffic speeds and volumes (over 40 mph or over 5000 ADT).
 - Re-establish speed. Determine exact speed limit in the field, dependent on location and conditions.
 - Determine the reduced speed limit based on the in-place speed limit before construction. Where speed reductions exceed 30 mph, install a second speed limit sign with the desired speed reduction (not to exceed 30 mph.) Place the second speed limit sign at 1/2 B.
 - Install flags on warning signs in urban areas when signs are not portable. Mount 24 inch square flags perpendicular to the edges of the sign, and at such a distance above the edge that the flag does not touch the sign when limp.
 - Cover existing speed limit signs within reduced speed zones.
 - Where necessary, engineer will determine safe speed.
 - As an option, use portable sign supports in lieu of post mounted signs in accordance with NDDOT Standard Drawing D-704-14.
 - Sign G20-55-96 is not required if this layout is part of other traffic control that contains this sign, or the work is less than 15 days.
 - Recommend using 40 mph speed limit in vicinity of workers, unless location and conditions dictate otherwise.

ADVANCE WARNING SIGN SPACING			
Road Type	Distance Between Signs Min. (ft)		
	A	B	C
Urban - Low Speed (30 mph or less)	150	150	150
Urban - Low Speed (over 30 to 40 mph)	280	280	280
Urban - High Speed (over 40 mph to 50 mph)	360	360	360
Rural - High Speed (over 50 mph to 65 mph)	720	720	720
Urban Expressway and Freeway (55 mph to 60 mph)	850	1350	2200
Rural Expressway and Freeway (70 mph to 75 mph)	1000	1500	2640
Interstate/4-Lane Divided (Maintenance and Surveying)	750	1000	1500

KEY

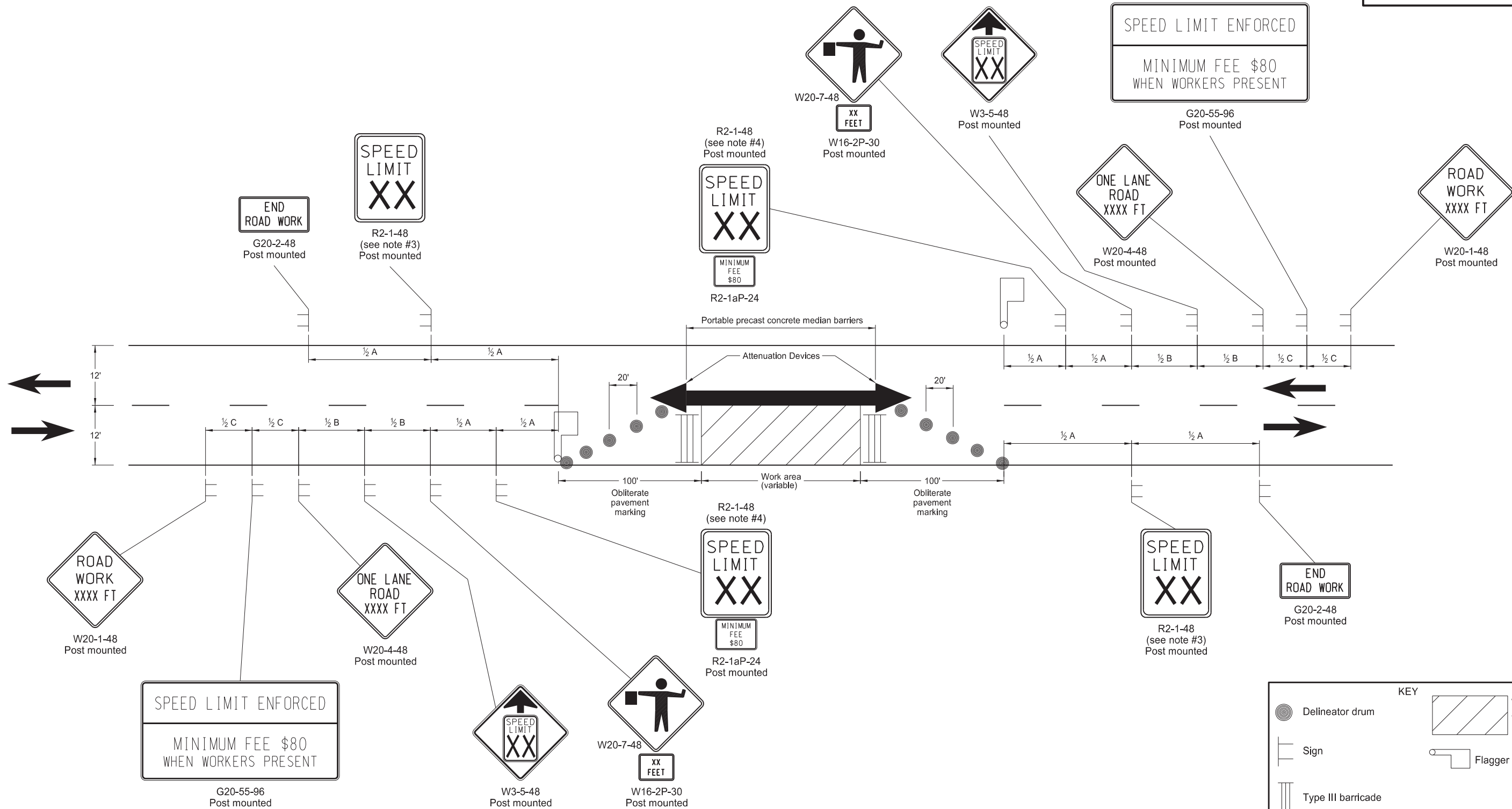
- Type III barricade
- Sign
- Delineator drum
- Tubular markers
- Work area
- Flagger
- Sequencing arrow panel
- Vertical panels back to back

NORTH DAKOTA DEPARTMENT OF TRANSPORTATION	
9-27-13	
REVISIONS	
DATE	CHANGE
08-17-17	Updated Notes & Spd Limit signs
11-01-19	Sign, Notes, & Pmnt Mk updates
12-08-21	Switched order of Road Work Ahead and Spd Limit Enforced & added Dollars At Work
11-29-22	Removed Dollars At Work

KIRK J. HOFF
REGISTERED
PROFESSIONAL
PE-4683
ENGINEER
NORTH DAKOTA
11/29/22

SIGN LAYOUT FOR ONE LANE CLOSURE TWO LANE ROADWAY

D-704-17



Notes:

1. Place barricades on moveable assemblies and signs on portable assemblies when located on roadway.
2. Remove existing striping as required. Use back to back delineators when inslope is 4:1 or flatter and roadway alignment is visible to approaching vehicles. Place back to back vertical panels when roadways have steep slopes and alignment is not visible to approaching traffic.
3. Re-establish speed limit. Determine exact speed limit in the field, dependent on location and conditions.
4. Determine the reduced speed limit based on the in-place speed limit before construction. Where speed reductions exceed 30 MPH, install a second speed limit sign with the desired speed reduction (not to exceed 30 MPH.) Place the second speed limit sign at 1/2B.
5. Install flags on warning signs in urban areas when signs are not portable. Mount 24 inch square flags perpendicular to the edges of the sign, and at such a distance above the edge that the flag does not touch the sign when limp.
6. As an option, use portable sign supports in lieu of post mounted signs in accordance with NDDOT Standard Drawing D-704-14.
7. Cover existing speed limit signs within a reduced speed zone.
8. Sign G20-55-96 is not required if this layout is part of other traffic control that contains this sign, or if work is less than 15 days.
9. Recommend using 40 mph speed limit in vicinity of workers, unless location and conditions dictate otherwise.

ADVANCE WARNING SIGN SPACING			
Road Type	Distance Between Signs		
	A	B	C
Urban - Low Speed (30 mph or less)	150	150	150
Urban - Low Speed (over 30 to 40 mph)	280	280	280
Urban - High Speed (over 40 mph to 50 mph)	360	360	360
Rural - High Speed (over 50 mph to 65 mph)	720	720	720
Urban Expressway and Freeway (55 mph to 60 mph)	850	1350	2200
Rural Expressway and Freeway (70 mph to 75 mph)	1000	1500	2640
Interstate/4-Lane Divided (Maintenance and Surveying)	750	1000	1500

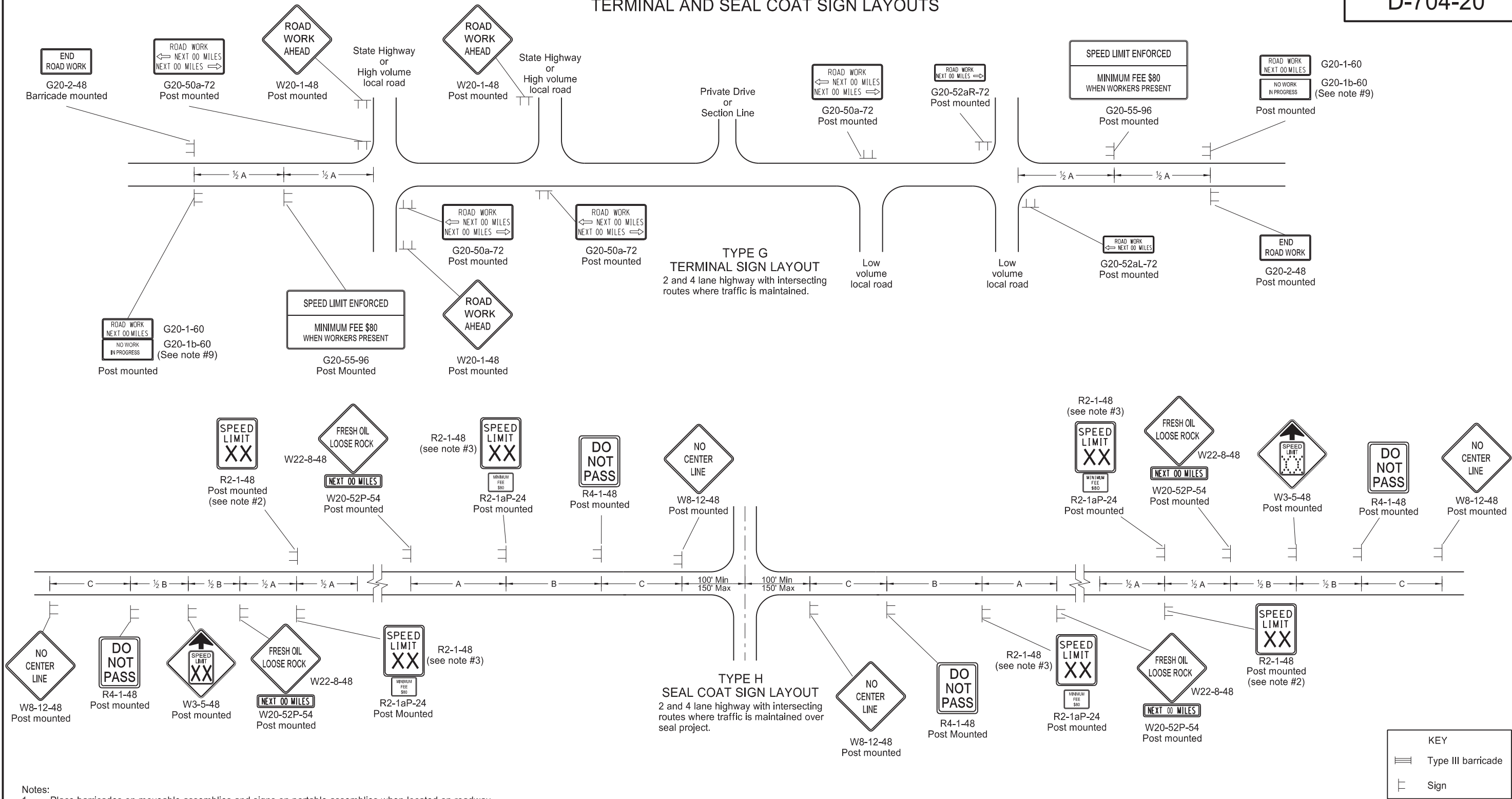
NORTH DAKOTA DEPARTMENT OF TRANSPORTATION	
9-27-13	
REVISIONS	
DATE	CHANGE
08-17-17	Note update & sign numbers
11-01-19	Removed signs & revised note
12-08-21	Switched order of Road Work XXXX and Spd Limit Enforced & added Dollars At Work
11-29-22	Removed Dollars At Work



11/29/22

TERMINAL AND SEAL COAT SIGN LAYOUTS

D-704-20



Notes:

- Place barricades on moveable assemblies and signs on portable assemblies when located on roadway.
- Determine the exact speed limit in the field, based on location and conditions.
- Determine the reduced speed limit based on the in place speed limit before construction. Where speed limit reductions exceed 30 MPH, install a second speed limit sign with the desired speed reduction (not to exceed 30 MPH.) Place the second speed limit sign at 1/2 B.
- Install flags on warning signs in urban areas when signs are not portable. Mount 24 inch square flags perpendicular to the edges of the sign, and at such a distance above the edge that the flag does not touch the sign when limp.
- Cover existing speed limit signs within a reduced speed zone.
- On seal coat projects, place signs R2-1-48, R2-1aP-24, R4-1-48, W22-8-48 and W20-52P-54 after all important intersections and at five mile intervals. Place sign W8-12-48 after all important intersections and at 2 mile intervals until short term center line pavement marking is placed.
- As an option, use portable sign supports in lieu of post mounted signs in accordance with the NDDOT Standard Drawing D-704-14.
- Cover or remove speed limit signs from layout Type H when loose aggregate is removed.
- Install sign G20-1b-60 when work is suspended for winter.
- Use other traffic control layouts in immediate work areas. Place sign R2-1aP-24 below speed limit signs in reduced speed limit work areas.
- Sign G20-55-96 is not required if this layout is part of other traffic control that contains this sign, or the work is less than 15 days.
- Recommend using 40 mph speed limit in vicinity of workers, unless location and conditions dictate otherwise.

ADVANCE WARNING SIGN SPACING			
Road Type	Distance Between Signs		
	Min. (ft)		
	A	B	C
Urban - Low Speed (30 mph or less)	150	150	150
Urban - Low Speed (over 30 to 40 mph)	280	280	280
Urban - High Speed (over 40 mph to 50 mph)	360	360	360
Rural - High Speed (over 50 mph to 65 mph)	720	720	720
Urban Expressway and Freeway (55 mph to 60 mph)	850	1350	2200
Rural Expressway and Freeway (70 mph to 75 mph)	1000	1500	2640
Interstate/4-Lane Divided (Maintenance and Surveying)	750	1000	1500

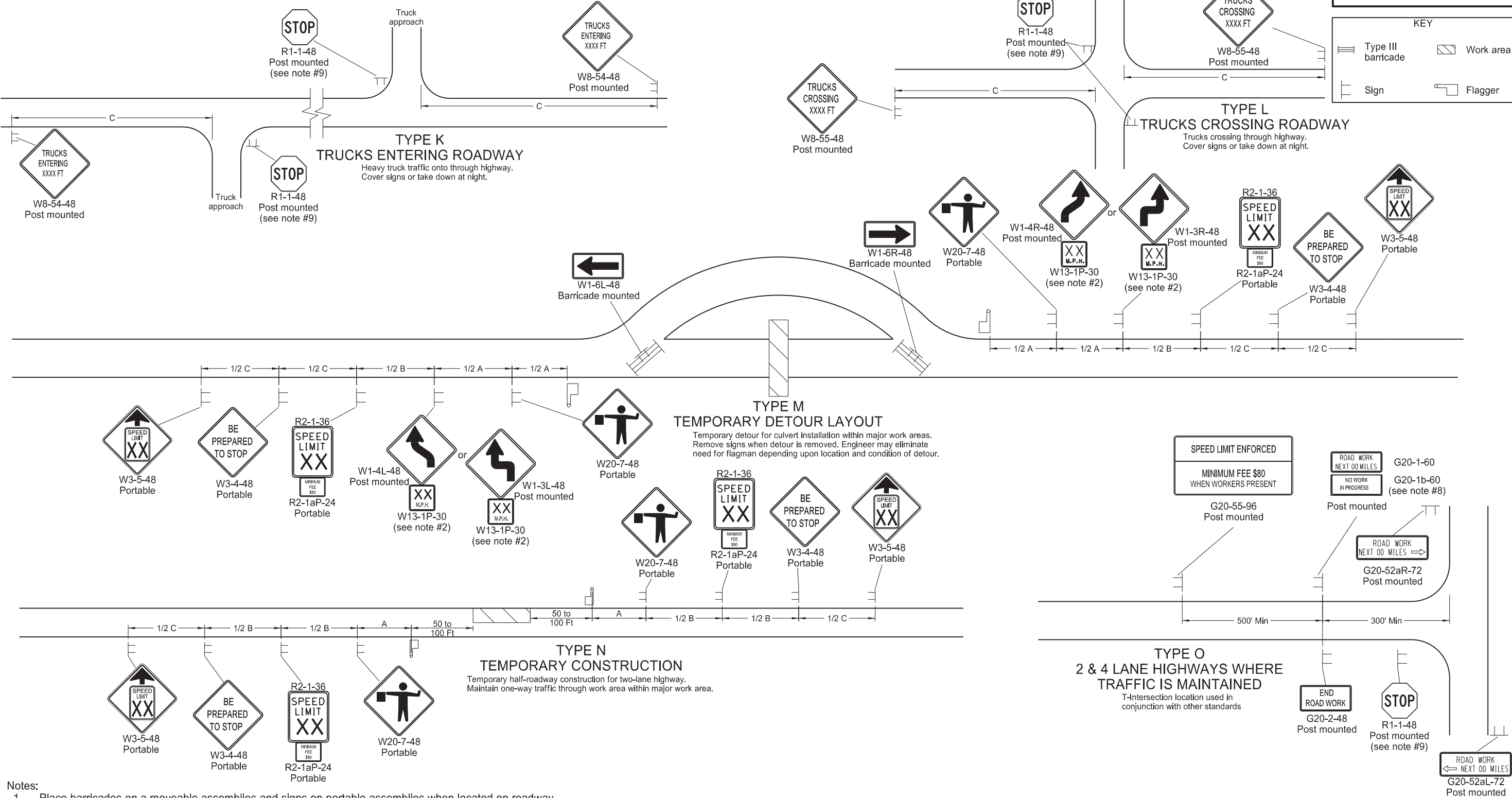
NORTH DAKOTA DEPARTMENT OF TRANSPORTATION	
9-27-13	
REVISIONS	
DATE	CHANGE
08-17-17	Updated notes & sign numbers
11-01-19	Updated note & sign
12-08-21	Switched order of Road Work and Spd Limit Enforced & added Dollars At Work
11-29-22	Removed Dollars At Work



11/29/22

CONSTRUCTION TRUCK AND TEMPORARY DETOUR LAYOUTS

D-704-22



Notes:

- Place barricades on a moveable assemblies and signs on portable assemblies when located on roadway.
- Where necessary, safe speed to be determined by the Engineer.
- Determine the reduced speed limit based on the in-place speed limit before construction. Where speed reductions exceed 30 mph, install a second speed limit sign with the desired speed reduction (not to exceed 30 mph.) Place the second speed limit sign at 1/2 B.
- Install flags on warning signs in urban areas when signs are not portable. Mount 24 inch square flags perpendicular to the edges of the sign, and at such a distance above the edge that the flag does not touch the sign when limp.
- Cover existing speed limit signs within a reduced speed zone.
- Covered (when approved by engineer) or obliterated pavement marking measured as Obliteration of Pavement Marking.
- As an option, use portable sign supports in lieu of post mounted signs in accordance with NDDOT Standard Drawing D-704-14.
- Install sign G20-1b-60 when work is suspended for winter.
- If existing stop sign is in place, a 48" stop sign is not required.
- Sign G20-55-96 is not required if layout is part of other traffic control that contains this sign, or if work is less than 15 days.
- Recommend using 40 mph speed limit in vicinity of workers, unless location and conditions dictate otherwise.

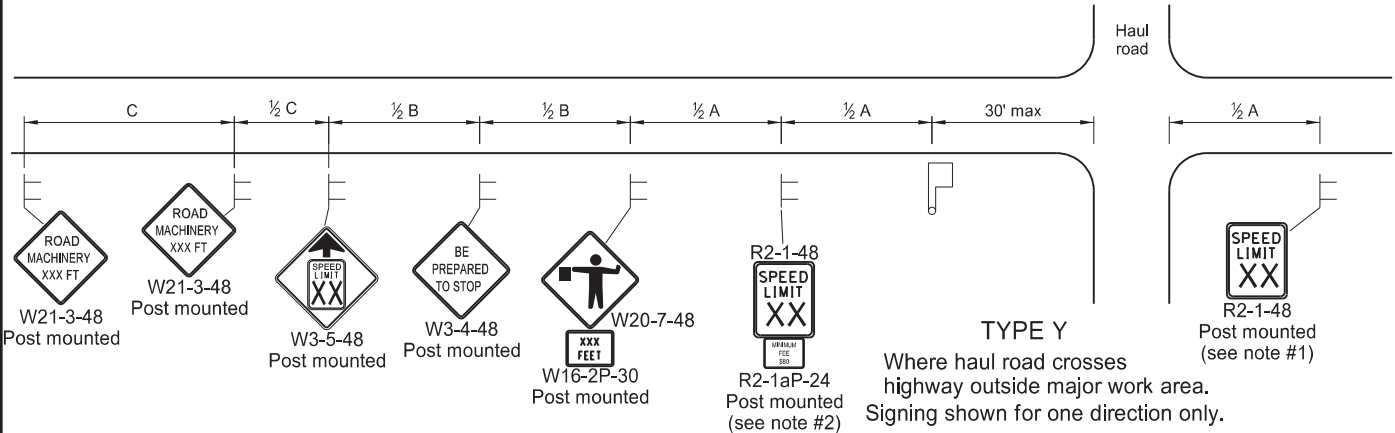
ADVANCE WARNING SIGN SPACING			
Road Type	Distance Between Signs Min. (ft)		
	A	B	C
Urban - Low Speed (30 mph or less)	150	150	150
Urban - Low Speed (over 30 to 40mph)	280	280	280
Urban - High Speed (over 40 mph to 50 mph)	360	360	360
Rural - High Speed (over 50 mph to 65 mph)	720	720	720
Urban Expressway and Freeway (55 mph to 60 mph)	850	1350	2200
Rural Expressway and Freeway (70 mph to 75 mph)	1000	1500	2640
Interstate/4-Lane Divided (Maintenance and Surveying)	750	1000	1500

NORTH DAKOTA DEPARTMENT OF TRANSPORTATION	
9-27-13	
REVISIONS	
DATE	CHANGE
08-17-17	Update notes & sign numbers
11-01-19	Revised sign numbers & note 7
12-09-21	Added Speed Limit Enforced and Dollars At Work signs
11-29-22	Removed Dollars At Work



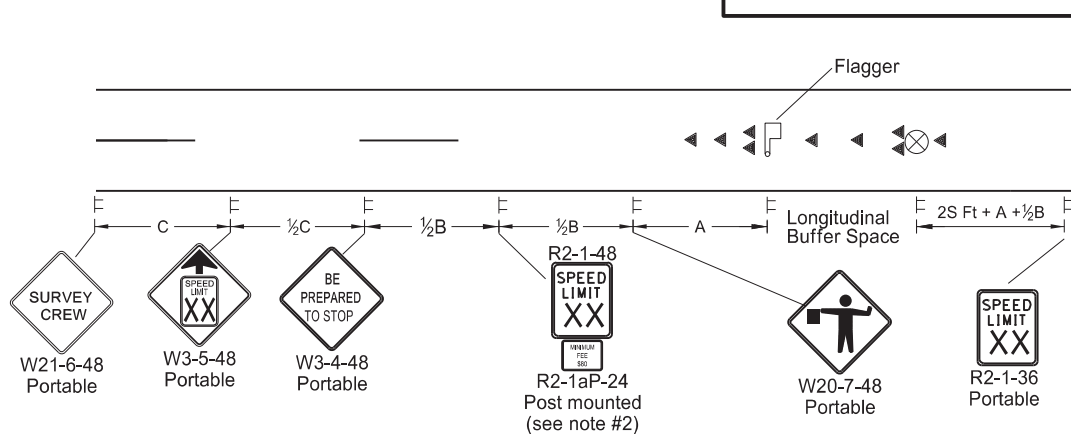
11/29/22

MISCELLANEOUS SIGN LAYOUTS

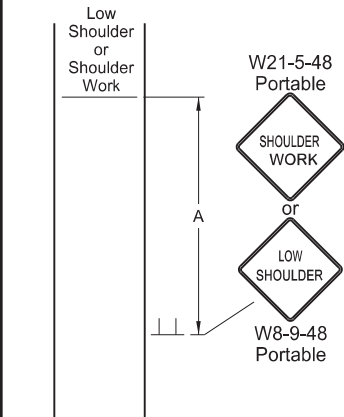


TYPE Y
Where haul road crosses
highway outside major work area.
Signing shown for one direction only.

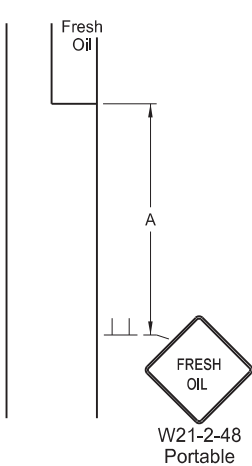
TYPE Z
Where speed zone is needed
Signing shown for one direction only.



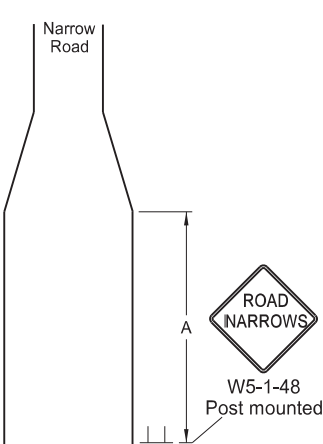
TYPE AA
Where survey crew is used
Signing shown for one direction only.



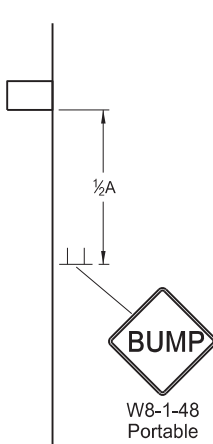
TYPE BB
Within major work area
where sign conditions exist



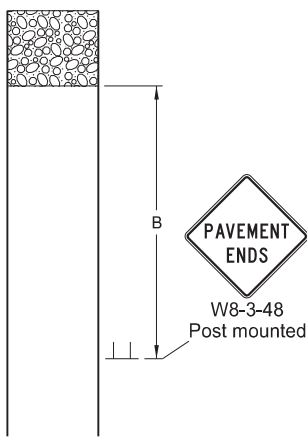
TYPE CC
Where sign conditions exist



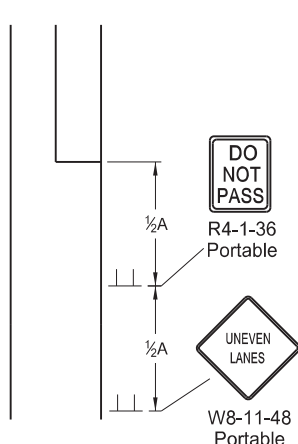
TYPE DD
Where sign conditions exist



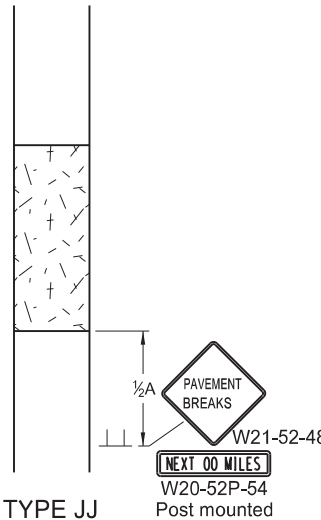
TYPE EE
Where sign conditions exist



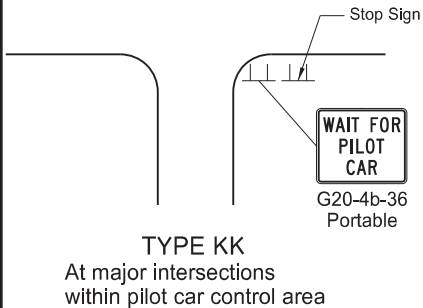
TYPE FF
Where sign conditions exist
Signing shown for one direction only.



TYPE GG
Where elevation difference
exists between lanes



TYPE JJ
For break in pavement.
Install signs when conditions exist
and remove when not applicable.
Signing shown for one direction only.



TYPE KK
At major intersections
within pilot car control area

- Notes
1. Re-establish speed limit. Determine exact speed limit in the field, dependent on location and conditions.
 2. Determine reduced speed limit based on in-place speed limit before construction. Where speed reductions exceed 30 mph, install a second speed limit sign with the desired speed reduction (not to exceed 30 mph.) Place the second speed limit sign at 1/2 B.
 3. Install flags on warning signs in urban areas when signs are not portable. Mount 24 inch square flags perpendicular to the edges of the sign, and at such a distance above the edge that the flag does not touch the sign when limp.
 4. Cover existing speed limit signs within reduced speed zones.
 5. As an option, use portable sign supports in lieu of post mounted signs in accordance with NDDOT Standard Drawing D-704-14.
 6. Sign G20-55-96 is not required if this standard is part of other traffic control layouts, or work is less than 15 days.
 7. When pilot car operation is used, place sign G20-4b-36 "Wait For Pilot Car" at major intersections within pilot car control area.
 8. Recommend 40 mph speed limit in vicinity of workers, unless location and conditions dictate otherwise.
 9. Layouts shown for one direction only.

ADVANCE WARNING SIGN SPACING			
Road Type	Distance Between Signs Min. (ft)		
	A	B	C
Urban - Low Speed (30 mph or less)	150	150	150
Urban - Low Speed (over 30 to 40 mph)	280	280	280
Urban - High Speed (over 40 mph to 50 mph)	360	360	360
Rural - High Speed (over 50 mph to 65 mph)	720	720	720
Urban Expressway and Freeway (55 mph to 60 mph)	850	1350	2200
Rural Expressway and Freeway (70 mph to 75 mph)	1000	1500	2640
Interstate/4-Lane Divided (Maintenance and Surveying)	750	1000	1500

Longitudinal Buffer Space	
*Speed (mph)	Length Min (feet)
20	115
25	155
30	200
35	250
40	305
45	360
50	425
55	495
60	570
65	645
70	730
75	820

* Posted speed, off-peak 85th percentile speed prior to work starting, or the anticipated operating speed in mph.

KEY

Flagger

Sign

Cones

Survey Equipment

S = Numerical value of speed limit or 85th percentile.

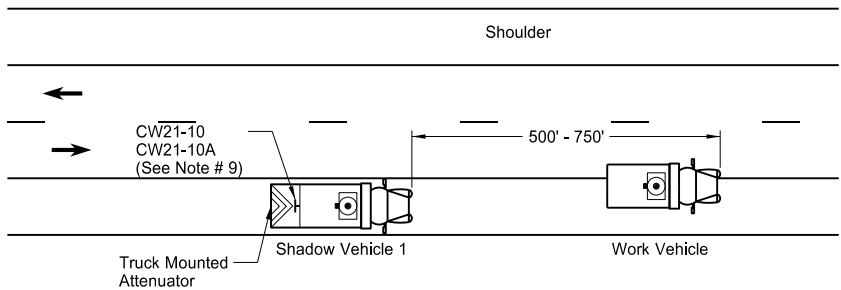
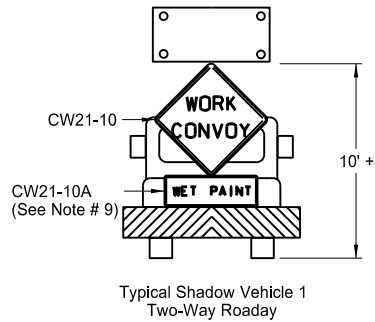
NORTH DAKOTA DEPARTMENT OF TRANSPORTATION	
9-27-13	
REVISIONS	
DATE	CHANGE
8-17-17	Added speed limit signs. Updated notes & sign numbers.
11-01-19	Revised note 5 & sign numbers.
2-23-23	Revised distance & removed signs.



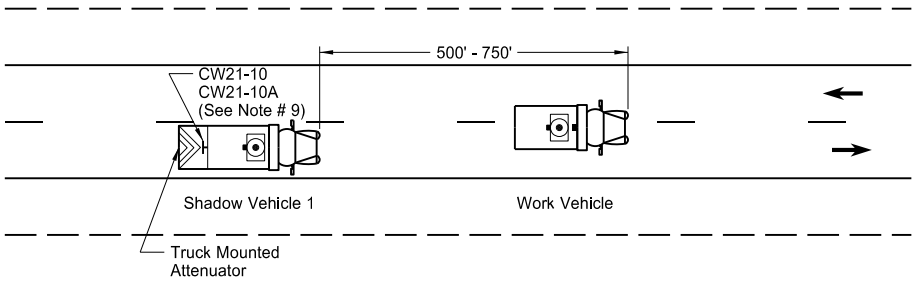
02/23/23

MOBILE OPERATION
(PAVEMENT MARKING)

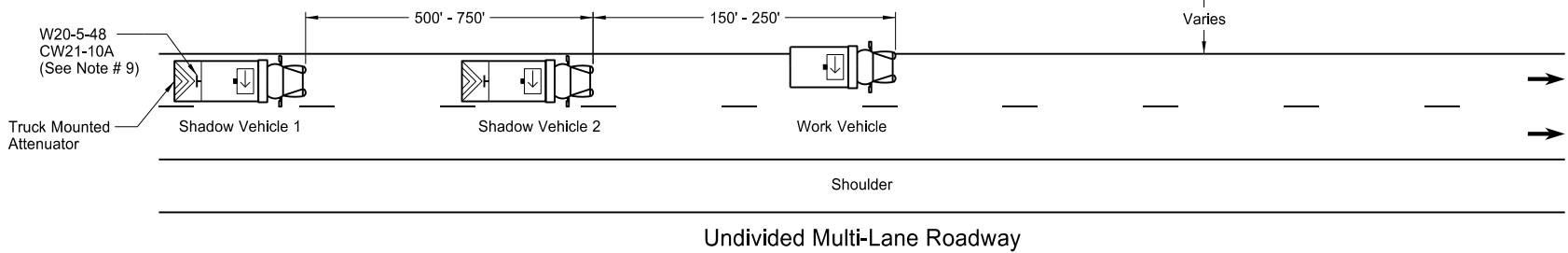
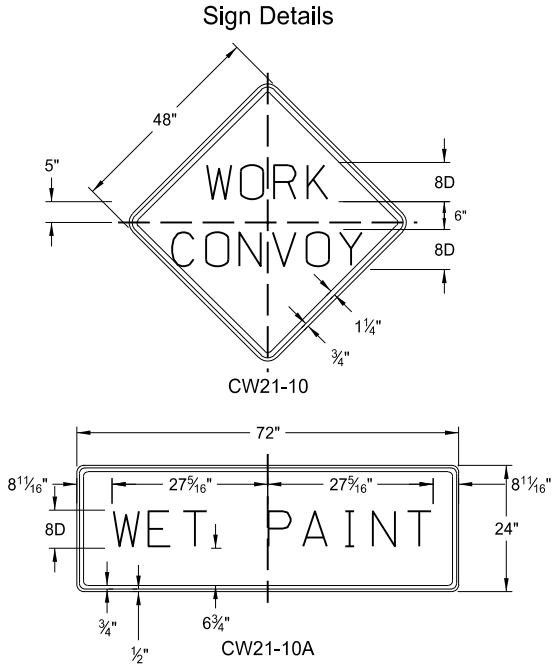
D-704-27



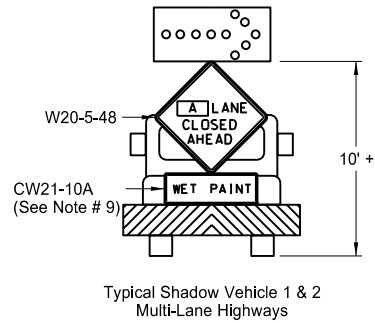
Two-Way Roadway with Paved Shoulders



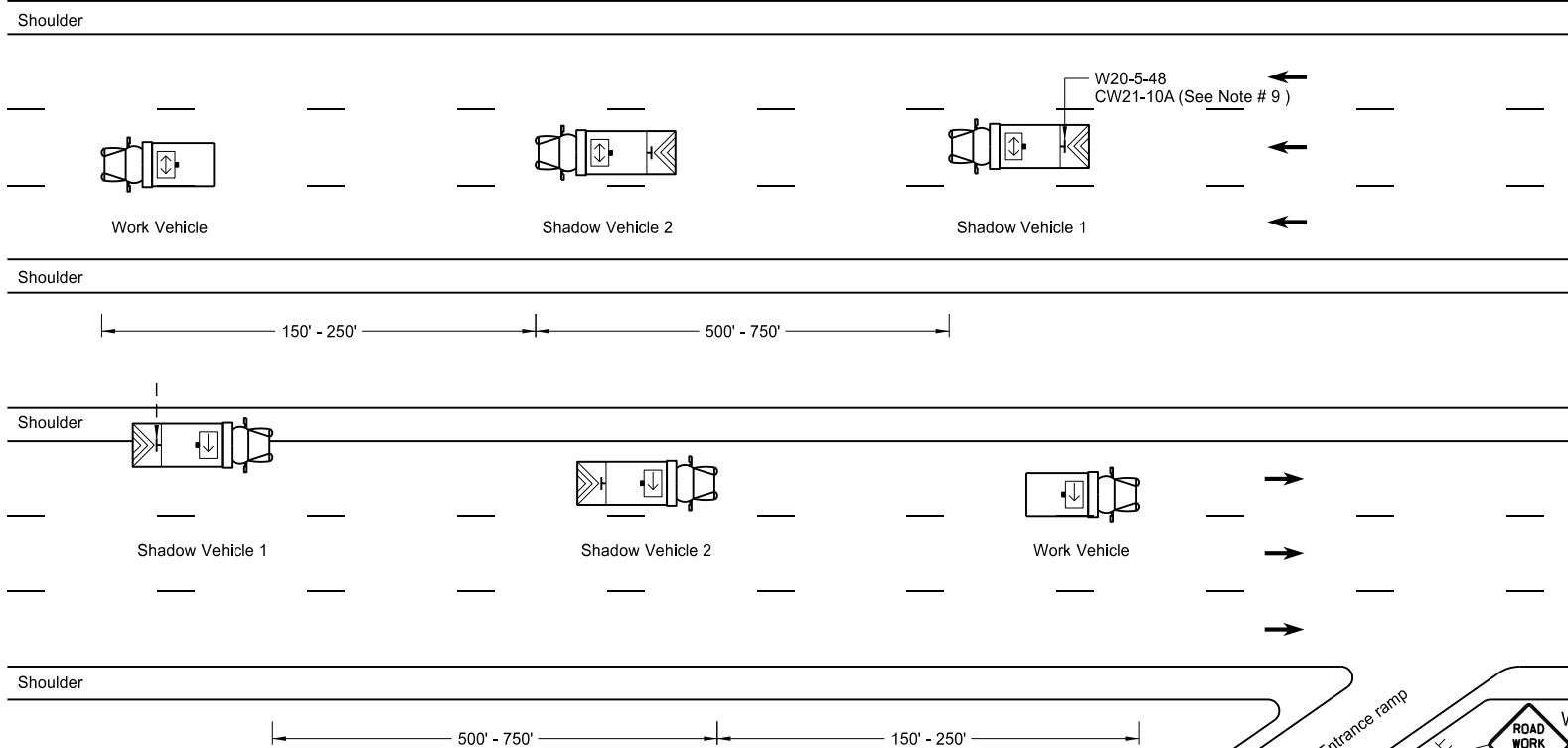
Two-Way Roadway without Paved Shoulders



Undivided Multi-Lane Roadway

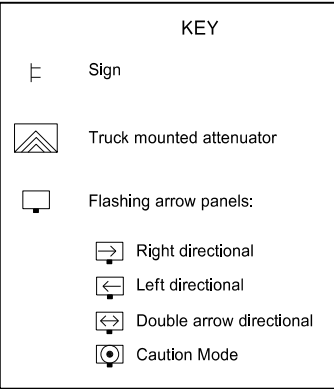


A = ☐ Left ☐ Right ☐ Center



Divided Multi-Lane Highway

- Notes
1. Use additional vehicles you choose to be in the convoy with truck mounted attenuators, at your own expense.
 2. Display yellow rotating beacons or strobe lights on shadow and work vehicles, unless otherwise stated in the plans.
 3. Use Type B or Type C flashing arrow panels controlled from inside the vehicle.
 4. Provide each vehicle with two-way electronic communication capability.
 5. Move shadow vehicle 1 first to shadow other convoy vehicles when convoy changes lane.
 6. Vary vehicle spacing between shadow vehicle 1 and shadow vehicle 2 based on sight distance restrictions. Motorists approaching the work convoy need to see trail vehicle in time to slow down and/or change lanes as they approach shadow vehicle.
 7. Sign Colors
Letters = Black
Border = Black
Background = Orange
 8. As an option, use shadow vehicle 2 the paint tender vehicle.
 9. Use sign CW21-10A only during painting operation.
 10. Pull over work and shadow vehicles periodically to allow motor vehicle traffic to pass on two lane - two way roadways.



NORTH DAKOTA DEPARTMENT OF TRANSPORTATION	
9-27-13	
REVISIONS	
DATE	CHANGE
6-18-14	Removed shadow vehicle 2 on two lane roadways
9-27-17	Updated to active voice
11-08-19	Changed Standard Heading

This document was originally issued and sealed by
Kirk J Hoff,
Registration Number
PE- 4683,
on 11/08/19 and the original document is stored at the
North Dakota Department
of Transportation

Work area

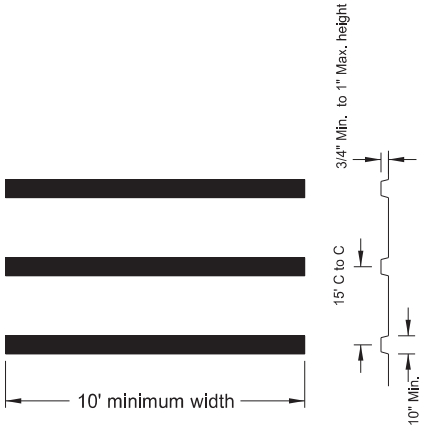
Flagger

Sign

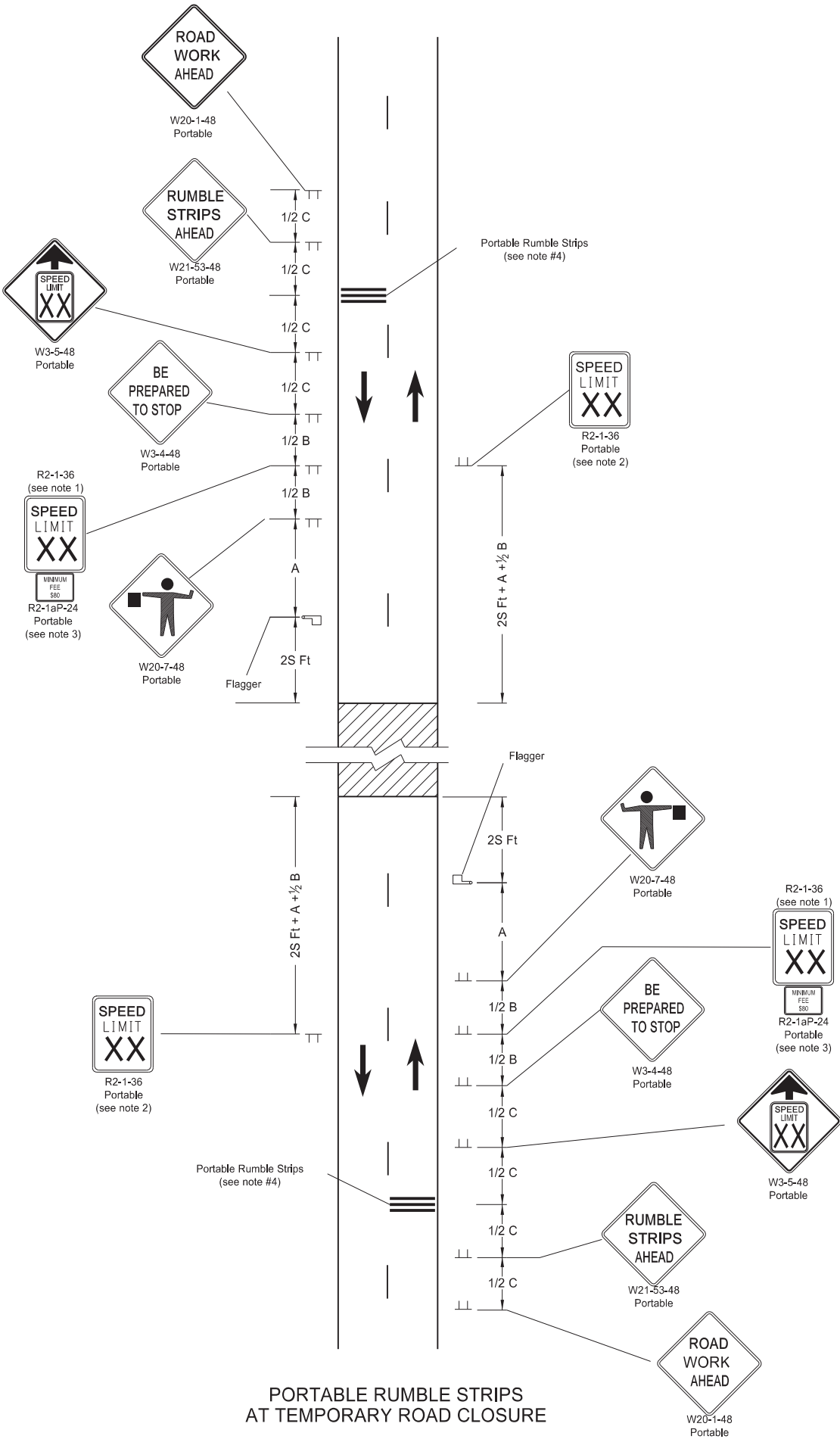
KEY

S = Numerical value of speed limit or 85th percentile.

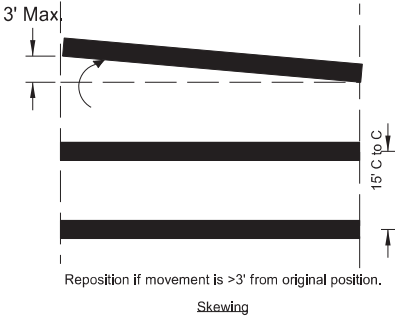
Road Type	ADVANCE WARNING SIGN SPACING		
	Distance Between Signs Min. (ft)		
	A	B	C
Urban - High Speed (over 45 mph to 50 mph)	360	360	360
Rural - High Speed (over 50 mph to 65 mph)	720	720	720



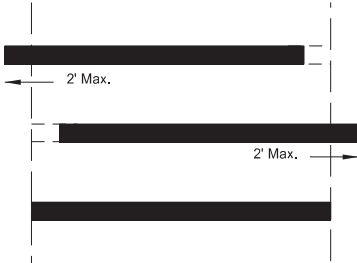
PORTABLE RUMBLE STRIPS ARRAY DETAIL



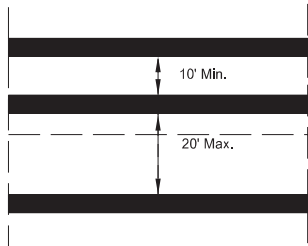
PORTABLE RUMBLE STRIPS
AT TEMPORARY ROAD CLOSURE



Skewing



Lateral



Perpendicular to Travel with or against Traffic

PORTABLE RUMBLE STRIPS ARRAY
TYPES OF MOVEMENT AND MAXIMUM ALLOWANCES

- Notes:
- Determine speed in the field based on location and conditions.
 - Re-establish the speed limit. Determine the exact speed limit in the field, dependent on location and conditions.
 - Sign R2-1aP-24 is not required when pilot car operation is used.
 - Do not use rumble strips on a non paved surface or in a pre-construction speed zone of 45 mph or less.

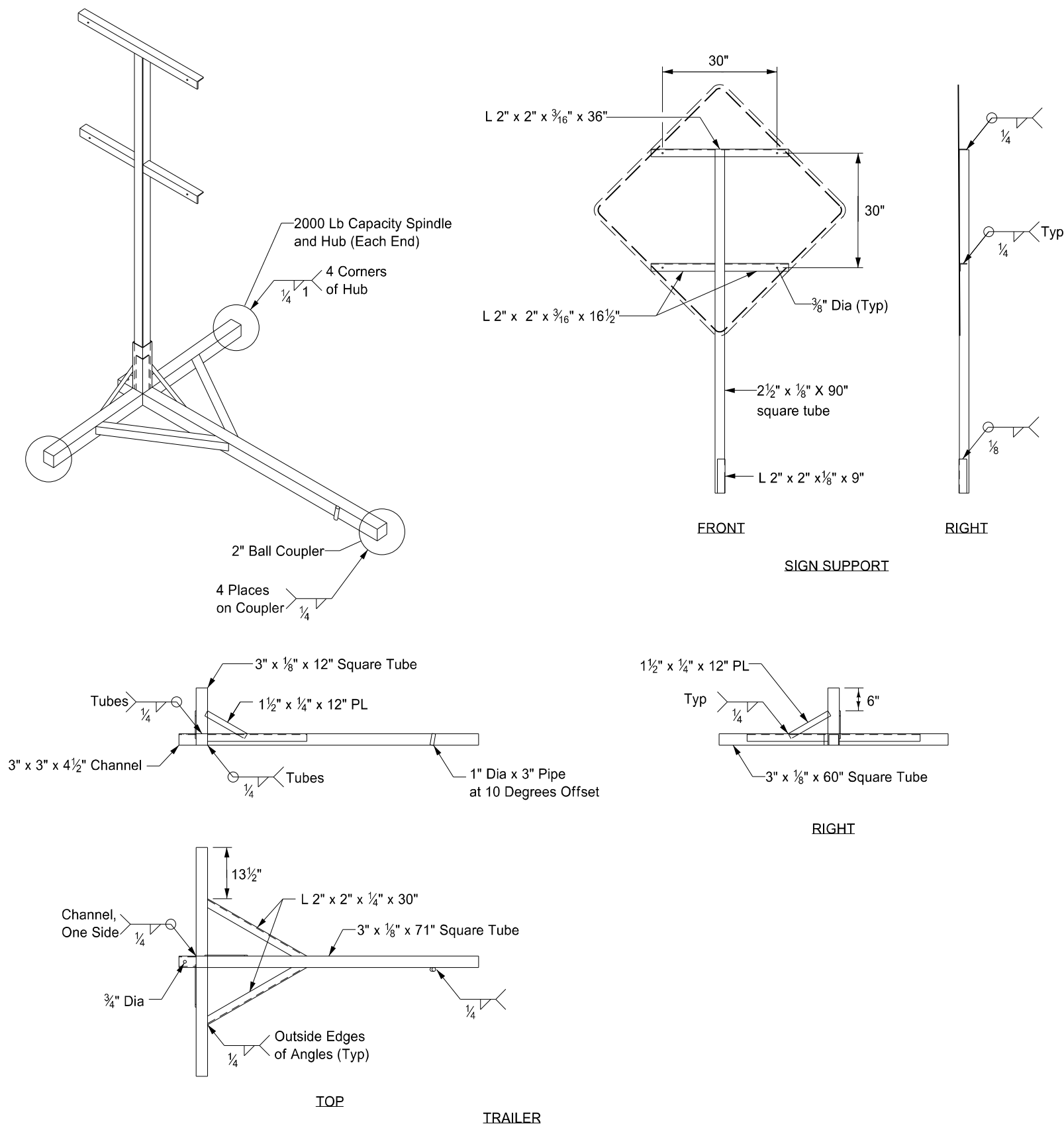
NORTH DAKOTA DEPARTMENT OF TRANSPORTATION	
02-22-22	
REVISIONS	
DATE	CHANGE
03/07/23	Use changed to min 45 mph.



03/07/23

PORTABLE SIGN SUPPORT ASSEMBLY

D-704-50



Notes:

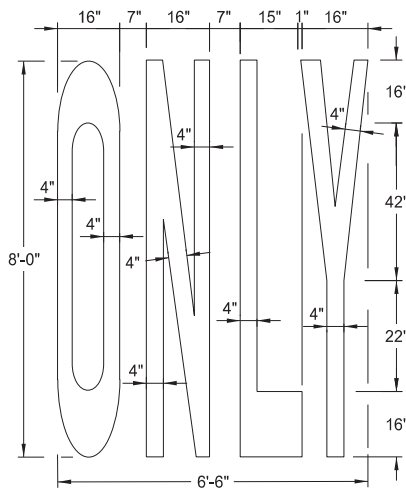
1. Maximum 250 pound weight of assembly.
2. Use a 14" wheel and tire.
3. Use no automotive and equipment axle assemblies for trailer-mounted sign supports.
4. Other NCHRP 350 or MASH crash tested assemblies are acceptable.

NORTH DAKOTA DEPARTMENT OF TRANSPORTATION	
11-23-10	
REVISIONS	
DATE	CHANGE
12/02/2020	Updated Note to active voice.

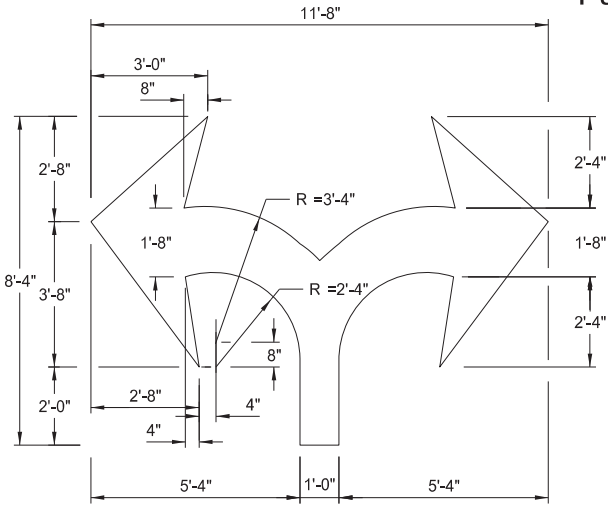


Pavement Marking Message Details

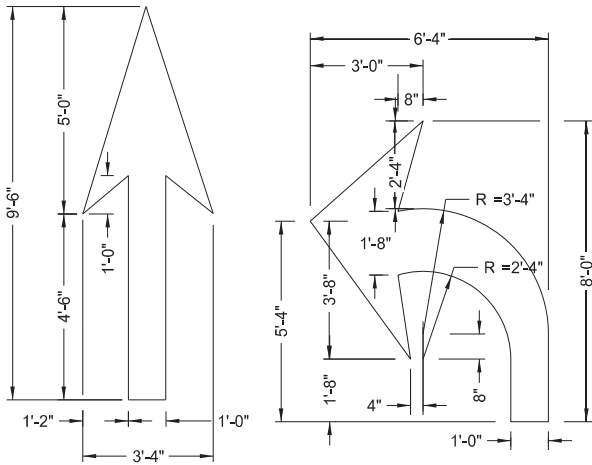
D-762-1



22 S. F.

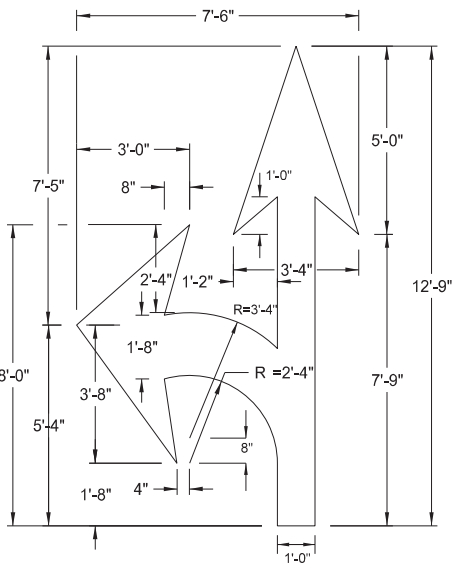


29 S. F.

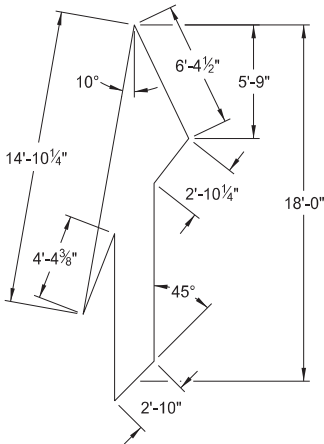


12 S. F.

16 S. F



27 S. F.

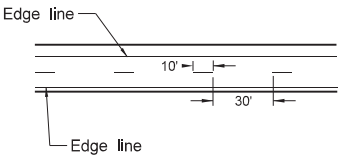


41 S. F.

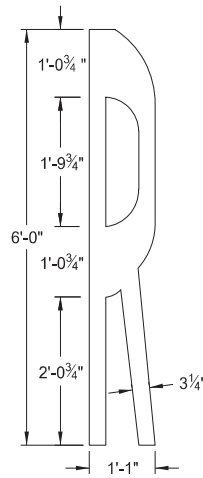
Note: Rotate merge arrow
20° from edge of roadway.

Speed Limit	Chevron Width	Chevron Spacing 45° to Traffic
0-25 mph	8"	5'
30-40 mph	8"	15'
45 mph and above	12"	25'

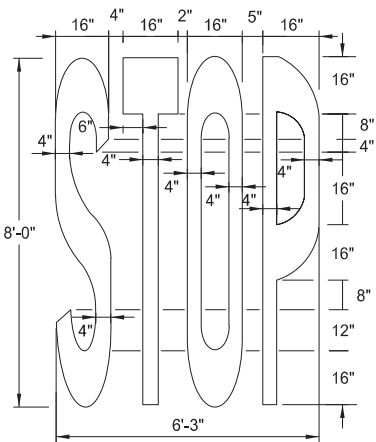
Chevron Crosshatching Table



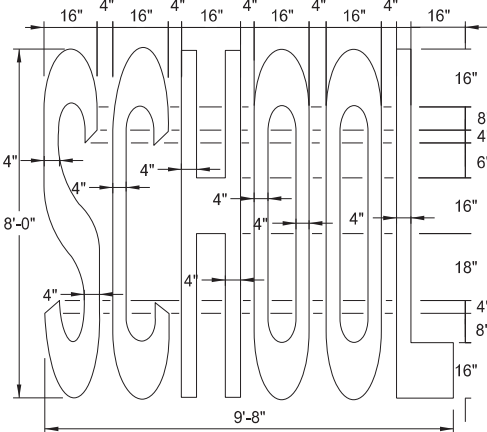
Centerline Pavement Marking Skip Spacing Detail



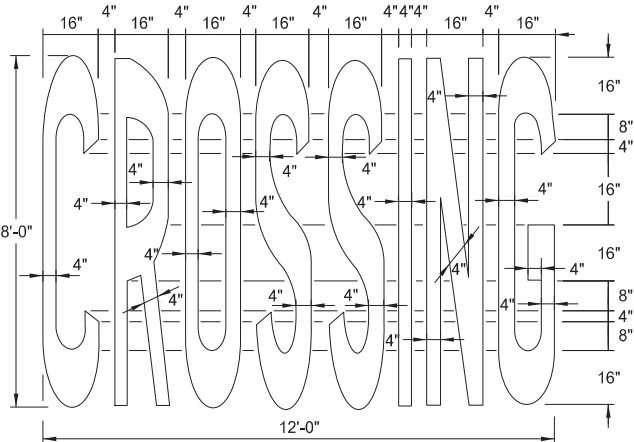
4 S. F.



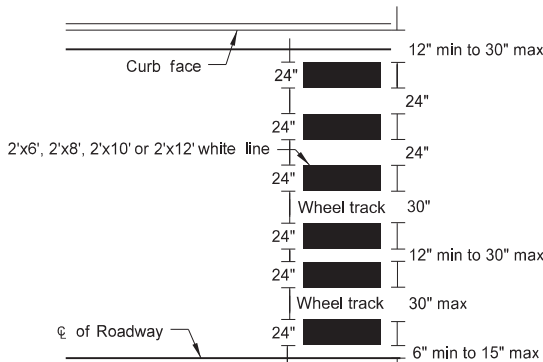
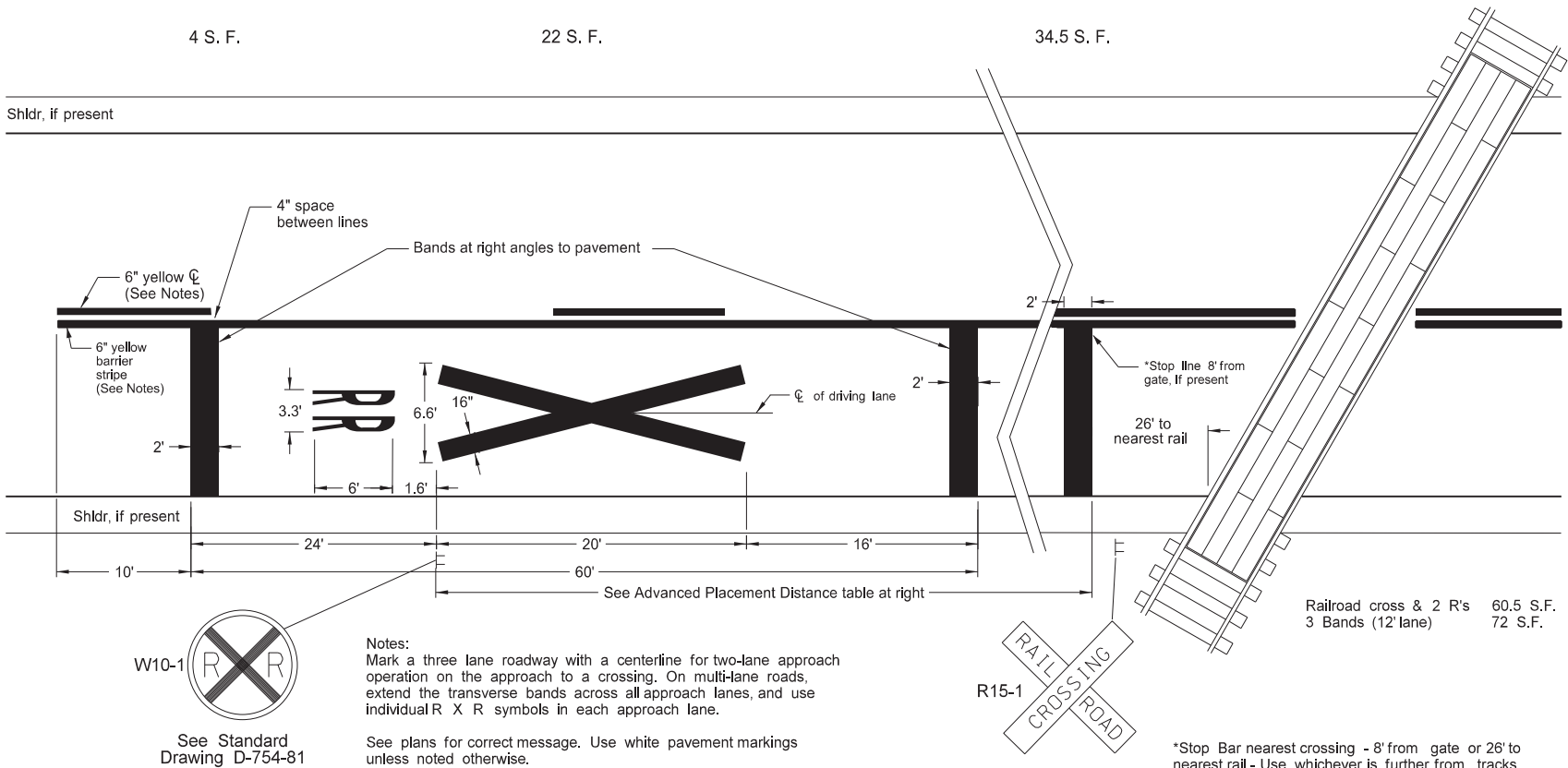
22 S. F.



34.5 S. F.



46 S. F.



Continental Crosswalk Detail

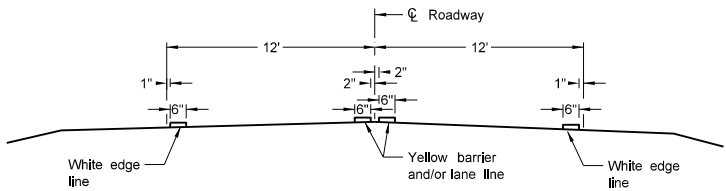
- NOTES:
1. Normal width line - 6 inches wide for freeways, expressways, and ramps; 6 inches for all other roadways with speed limits > 40 mph,
 2. Use 4 or 6 inch wide pavement marking for all other roadways with speed limits ≤ 40 mph.

Advance Placement Distance for Railroad Warning Signs	
Posted or 85th Percentile Speed	Advance Distance
20 mph	min. 100 ft
25 mph	min. 100 ft
30 mph	min. 100 ft
35 mph	min. 100 ft
40 mph	125 ft
45 mph	175 ft
50 mph	250 ft
55 mph	325 ft
60 mph	400 ft
65 mph	475 ft
70 mph	550 ft

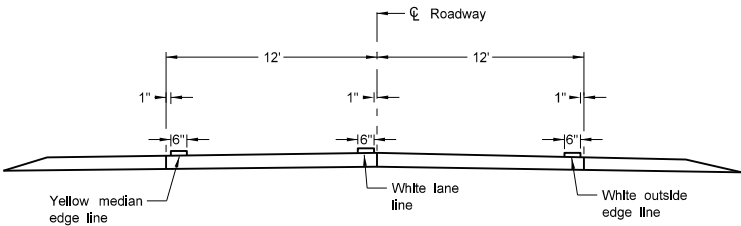
[illegible]

PAVEMENT MARKING

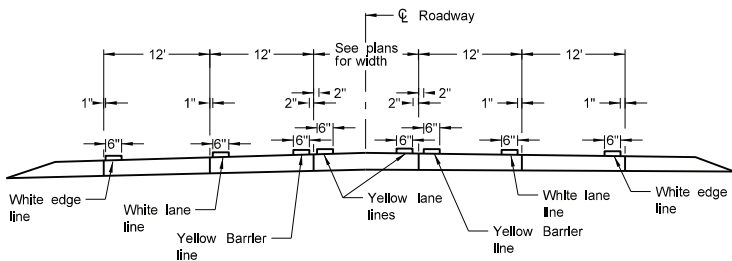
D-762-4



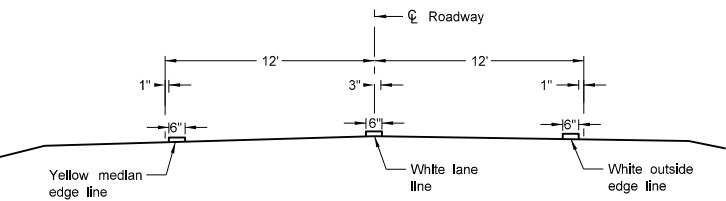
Two Lane Two Way
RURAL ROADWAY



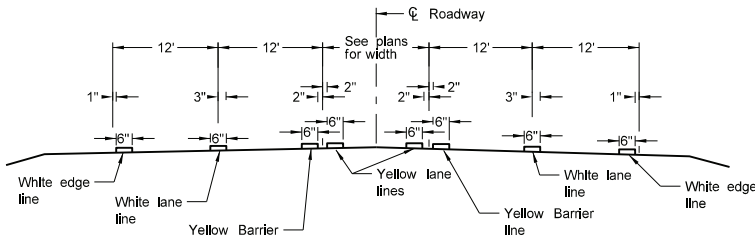
Two Lane Roadway
INTERSTATE HIGHWAY
Concrete Section



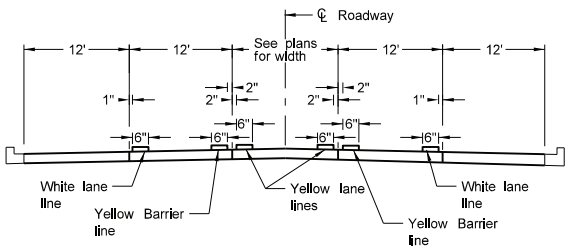
RURAL FIVE LANE ROADWAY
Concrete Section



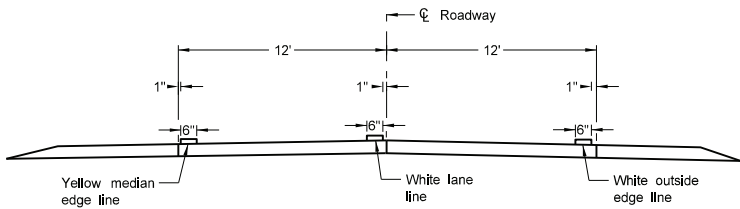
Two Lane Divided
Rural Roadway
PRIMARY HIGHWAY
Asphalt Section



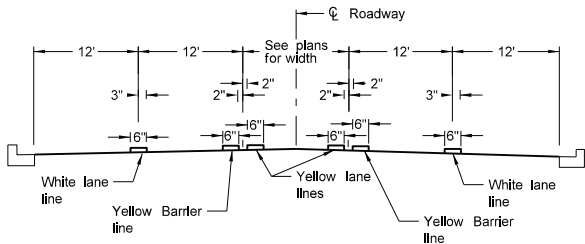
RURAL FIVE LANE ROADWAY
Asphalt Section



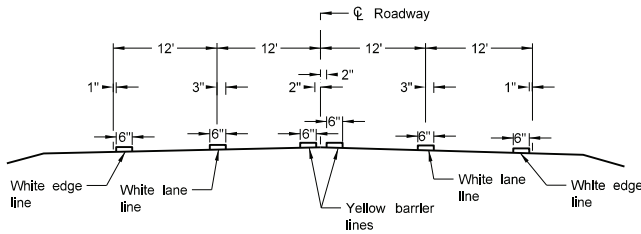
URBAN FIVE LANE SECTION
Concrete Section



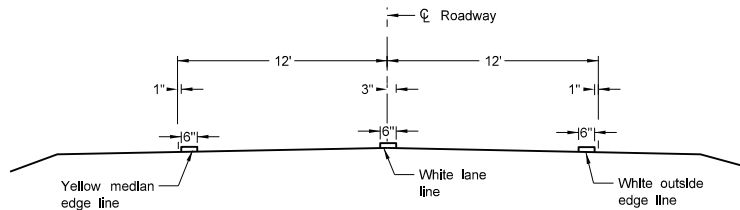
Two Lane Divided
Rural Roadway
PRIMARY HIGHWAY
Concrete Section



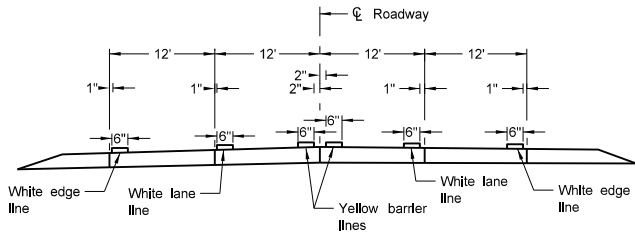
URBAN FIVE LANE SECTION
Asphalt Section



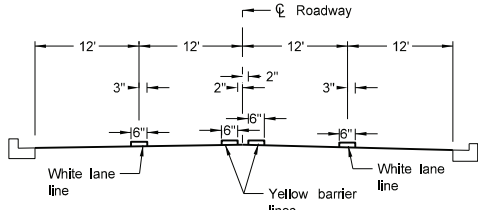
RURAL FOUR LANE ROADWAY
Asphalt Section



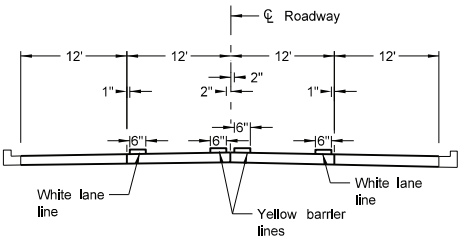
Two Lane Roadway
INTERSTATE HIGHWAY
Asphalt Section



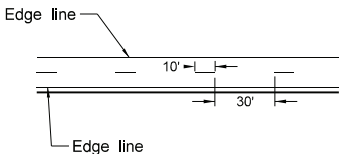
RURAL FOUR LANE ROADWAY
Concrete Section



URBAN FOUR LANE SECTION
Asphalt Section



URBAN FOUR LANE SECTION
Concrete Section



CENTERLINE PAVEMENT MARKING SKIP SPACING DETAIL

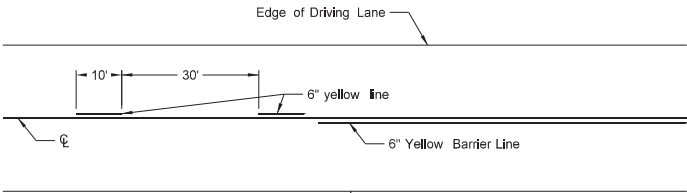
- NOTES:
1. Continue edge lines through private drives and field drives. Break edge lines for intersections.
 2. Normal width line - 6 inches wide for freeways, expressways, and ramps; 6 inches for all other roadways with speed limits > 40 mph.
 3. Use 4 or 6 inch wide pavement marking for all other roadways with speed limits < 40 mph.

NORTH DAKOTA DEPARTMENT OF TRANSPORTATION	
12-1-10	
REVISIONS	
DATE	CHANGE
10-17-17	Updated to active voice.
08-27-19	New Design Engineer PE Stamp.
11-22-23	Revised pavement marking widths.
07-09-24	Modified Note 1.

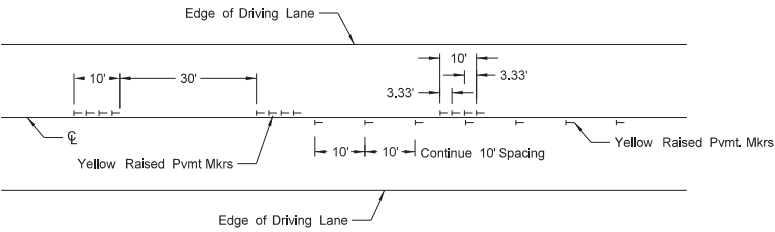


SHORT-TERM PAVEMENT MARKING

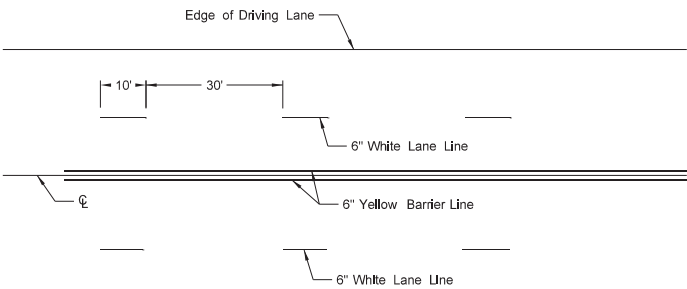
D-762-11



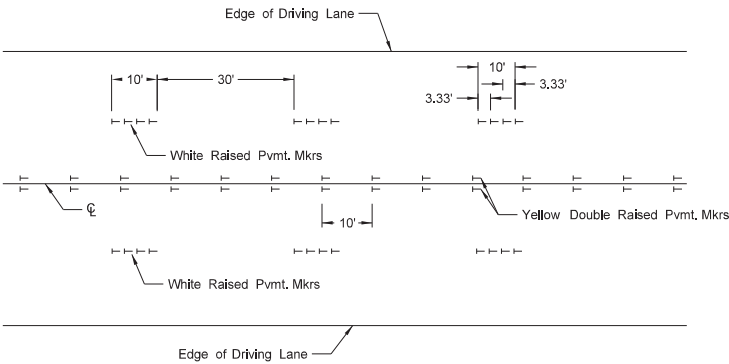
Painted or Tape Lines



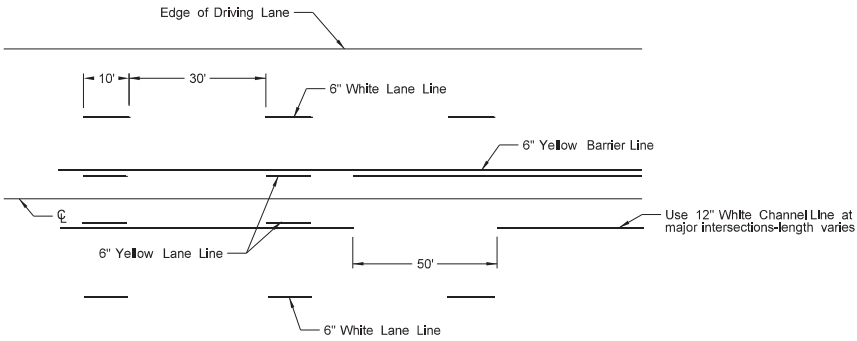
Raised Pavement Markers
TWO-LANE TWO-WAY ROADWAY



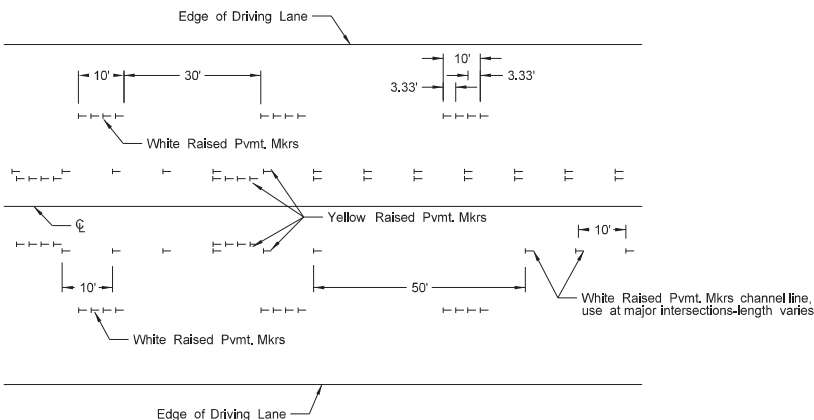
Painted or Tape Lines



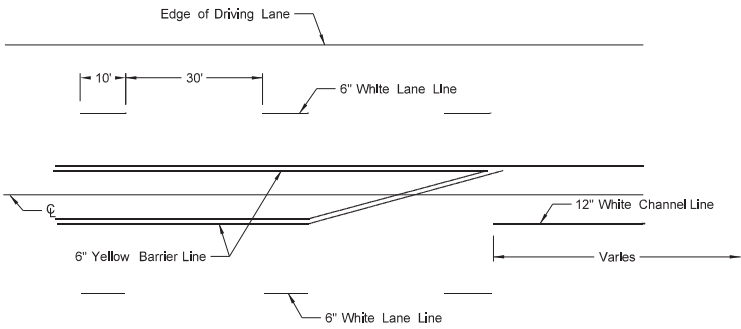
Raised Pavement Markers
FOUR LANE ROADWAY



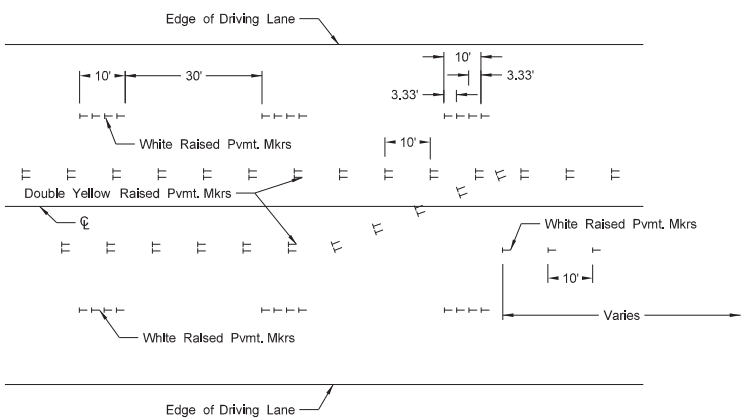
Painted or Tape Lines



Raised Pavement Markers
FIVE LANE ROADWAY TWO WAY LEFT TURN



Painted or Tape Lines



Raised Pavement Markers
FIVE LANE ROADWAY WITH MARKED ISLANDS

NOTES:

1. Place no passing zones on two-lane two-way roadways as shown. In lieu of short term no passing zone pavement markings, place no passing zone signs. Replace no passing zone signs with short term no passing zone pavement marking within three days.
2. Place short term center line stripe (paint) on top lift to match exact placement of permanent stripe.
3. Remove raised markers and tape markings after permanent pavement marking is installed.
4. Normal width line - 6 inches wide for freeways, expressways, and ramps; 6 inches for all other roadways with speed limits > 40 mph.
5. Use 4 or 6 inch wide pavement marking for all other roadways with speed limits ≤ 40 mph.
6. Wide lines - 8 inches wide if 4 inch normal width lines are used and 12 inches wide if 6 inch normal width lines are used.

NORTH DAKOTA DEPARTMENT OF TRANSPORTATION	
12-1-10	
REVISIONS	
DATE	CHANGE
3-29-16	Re-numbered to be D-762-11 (previously was D-762-6)
10-17-17	Updated to active voice.
8-27-19	New Design Engineer PE Stamp.
11-22-23	Revised pavement marking widths
1-17-24	Revised wide pvmt marking width.

