

MINNESOTA DEPARTMENT OF TRANSPORTATION

MEEKER COUNTY

STATE AID PROJECT NO. S.A.P. 047-612-008

CONSTRUCTION PLAN FOR CSAH 12

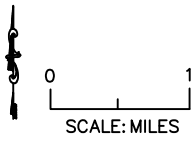
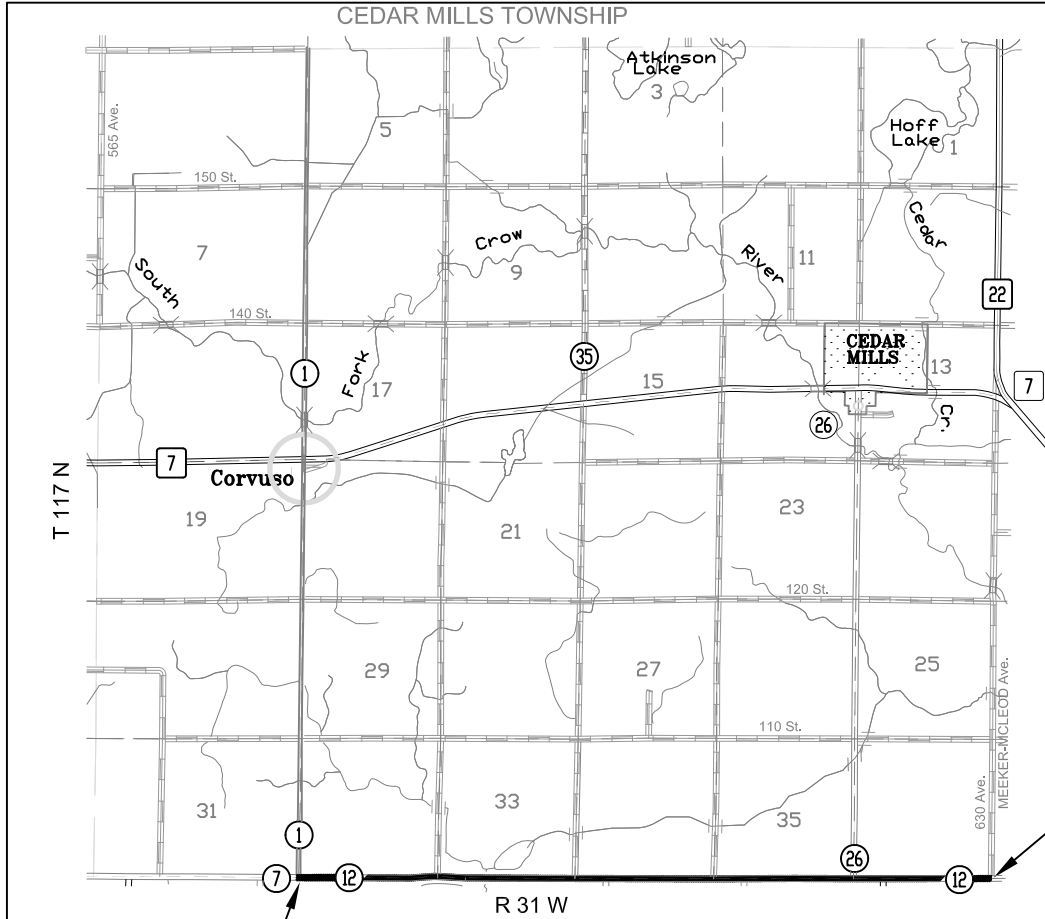
PAVEMENT RECLAMATION, BITUMINOUS SURFACE AND AGGREGATE SHOULDERS

LOCATED ON: CSAH 12 BETWEEN: CSAH 1 AND THE EAST COUNTY LINE

LOCATED IN: T.117N. R.31W. SECTIONS: 32-36

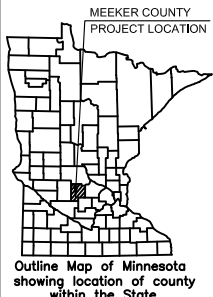
GRADED UNDER: S.A.P.047-612-01 (1974) AND S.A.P.047-612-03 (1978)

GROSS LENGTH 26,730 FEET 5.062 MILES
 BRIDGES-LENGTH _____ FEET _____ MILES
 EXCEPTIONS-LENGTH _____ FEET _____ MILES
 NET. LENGTH 26,730 FEET 5.062 MILES



END
SAP 047-612-008
STA. 267+30

BEGIN
SAP 047-612-008
STA 0+00



INDEX

SHEET 1 TITLE SHEET

SHEET 2 ESTIMATED QUANTITIES

SHEET 3-4 TYPICAL SECTIONS

THIS PLAN CONTAINS 4 SHEETS

CSAH 12
 DESIGN DESIGNATION
 10 TON DESIGN
 POSTED SPEED 55 MPH
 R VALUE 18
 ADT (2025) 630
 PROJ. ADT (2045) 693
 20 YR BESALS 210,000
 SHOULDER WIDTH 5' - 6'

GOVERNING SPECIFICATIONS
 THE 2020 EDITION OF THE MINNESOTA DEPARTMENT OF TRANSPORTATION "STANDARD SPECIFICATIONS FOR CONSTRUCTION" SHALL GOVERN.

SIGNATURE *Phil Schmalz* PRINTED NAME PHIL SCHMALZ
 I HEREBY CERTIFY THAT THIS PLAN WAS PREPARED BY ME OR UNDER MY DIRECT SUPERVISION, AND THAT I AM A DULY LICENSED PROFESSIONAL ENGINEER UNDER THE LAWS OF THE STATE OF MINNESOTA.
 DATE: 1/17/2025 LICENSE NUMBER: 50403

APPROVED: MEEKER COUNTY ENGINEER *Phil Schmalz* DATE: 1/17/2025

DISTRICT STATE AID ENGINEER: REVIEWED FOR COMPLIANCE WITH STATE AID RULES/POLICY DATE: _____

APPROVED FOR STATE AID FUNDING: STATE AID ENGINEER DATE: _____

STATE AID PROJECT No. 047-612-008			
CSAH 12 FULL DEPTH RECLAMATION AND PAVING			
ESTIMATED QUANTITIES			
SPEC. NO.	ITEM	UNIT	EST. QUANTITY
2021.501	MOBILIZATION	LS	1
1) 2215.504	FULL DEPTH RECLAMATION	SY	87,195
2) 2221.509	SHOULDER BASE AGGREGATE, CL 1 (P)	TON	7,196
3) 2232.504	MILL BITUMINOUS SURFACE (VAR DEPTH)	SY	106
4) 2357.506	BITUMINOUS MATERIAL FOR TACK COAT	GAL	5,126
5) 2360.509	TYPE SP 12.5 NON WEARING COURSE MIXTURE (2, C)	TON	12,066
6) 2360.509	TYPE SP 9.5 WEARING COURSE MIXTURE (2, C)	TON	7,240
7) 2540.602	MAILBOX SUPPORT	EACH	11
8) 2582.503	4" BROKEN LINE PAINT	LIN FT	5,380
9) 2582.503	4" SOLID LINE PAINT	LIN FT	1,770
10) 2582.503	6" SOLID LINE PAINT	LIN FT	52,586

(P) DESIGNATES PLAN QUANTITY

- 1) INCLUDES 4035 SY FOR APPROACHES AND ENTRANCES.
- 2) INCLUDES 409 TONS FOR APPROACHES AND ENTRANCES.
- 3) SEE TAB A FOR LOCATIONS.
- 4) INCLUDES 136 GALLONS FOR ROAD APPROACHES AND ENTRANCES.
- 5) INCLUDES 320 TONS FOR ENTRANCES AND APPROACHES.
- 6) INCLUDES 192 TONS FOR ENTRANCES AND ROAD APPROACHES.
- 7) INCLUDES REMOVING INPLACE POST, INSTALLING NEW POST AND SALVAGING INPLACE MAILBOX AND REPLACING ON POST. IF MAILBOX CANNOT BE SALVAGED A NEW BOX WILL BE PROVIDED BY THE COUNTY. REPLACEMENT POST LOCATIONS WILL BE DESIGNATED ON THE PROJECT.
- 8) ON THE FINAL WEAR COURSE ONLY, PAINT SHALL BE YELLOW.
- 9) ON THE FINAL WEAR COURSE ONLY, PAINT SHALL BE YELLOW. INCLUDES 270 LIN FT OF DOUBLE SOLID PAINT (135 ACTUAL ROAD LIN FT).
- 10) ON THE FINAL WEAR COURSE ONLY, PAINT SHALL BE WHITE.

THE FOLLOWING STANDARD PLATES AS APPROVED BY THE FHWA SHALL APPLY ON THIS PROJECT

8000K	TEMPORARY CHANNELIZERS
9000E	APPROACHES AND ENTRANCES
9350C	MAILBOX SUPPORT

NOTES:

TRAFFIC CONTROL WILL BE INCIDENTAL AND IS THE CONTRACTOR'S RESPONSIBILITY. ALL TRAFFIC CONTROL DEVICES SHALL CONFORM TO THE LATEST MMUTCD, INCLUDING THE LATEST FIELD MANUAL FOR TEMPORARY TRAFFIC CONTROL ZONE LAYOUTS.

THE SUBSURFACE UTILITY INFORMATION IN THIS PLAN IS UTILITY QUALITY LEVEL D. THIS UTILITY QUALITY LEVEL WAS DETERMINED ACCORDING TO THE GUIDELINES OF CI/ASCE 38-22, ENTITLED "STANDARD GUIDELINES FOR INVESTIGATING AND DOCUMENTING EXISTING UTILITIES".

MILL BITUMINOUS SURFACE (VAR.)			
LOCATION	LENGTH (FT)	WIDTH (FT)	AREA (SY)
CSAH 12 STA. 0+00	24	6	16
CSAH 1	89	4	40
CO. RD. 24	24	4	11
DVWY 60308	19	2	4
DVWY 56577	15	2	3
CSAH 26	35	4	16
CSAH 12 STA. 267+30	24	6	16
TOTAL			106

BASIS OF PLANNED QUANTITIES

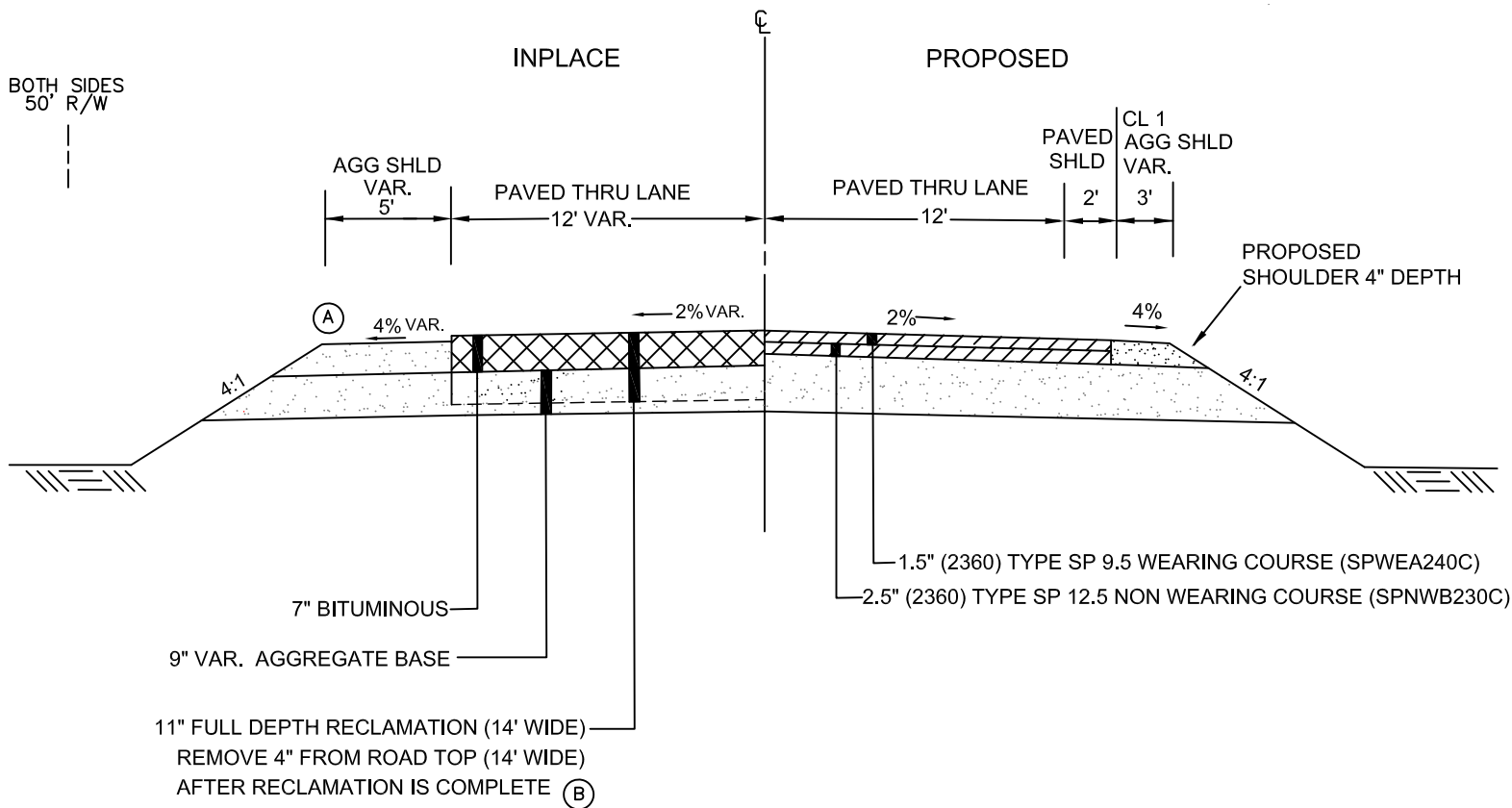
AGGREGATE SHOULDERING - 1 TON = 0.55 CU YD
 BITUMINOUS MIX - 113 lbs/sq yd/in deep
 TACK COAT - 0.06 gal/sq yd

QUANTITIES INCLUDED FOR:

43 GVL. FIELD APPROACHES
 2 GRAVEL DRIVEWAY ENTRANCES
 13 PAVED DRIVEWAY ENTRANCES
 AND 9 ROAD APPROACHES

ESTIMATED QUANTITIES

CSAH 12
FROM CSAH 1 TO CSAH 26
STA. 0+00 to 214+00



NOTES

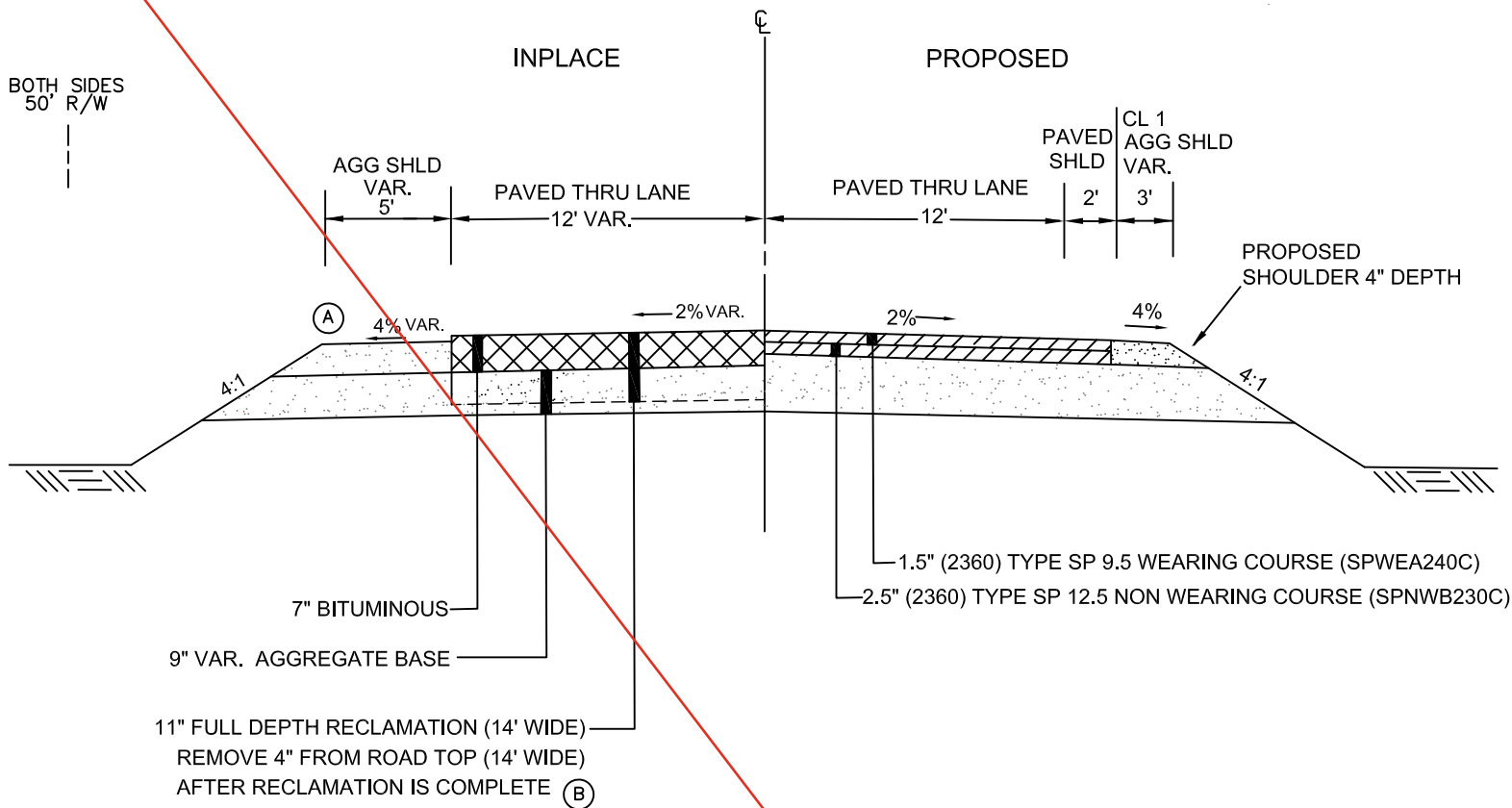
- (A) EXISTING SHOULDER MATERIAL IS APPROXIMATELY 1.5" BELOW PAVEMENT EDGE. EXISTING SHOULDER MATERIAL SHALL BE PULLED IN AND BLENDED WITH RECLAIM MATERIAL AS NECESSARY TO ACCOMMODATE PAVING, INCIDENTAL TO FULL DEPTH RECLAMATION.
- (B) REMOVING, HAULING AND STOCKPILING THE TOP 4" OF RECLAIMED MATERIAL IS INCIDENTAL TO FULL DEPTH RECLAMATION. RECLAIMED MATERIAL MAY BE USED IN LEIU OF CL1 AGG. ON PROPOSED SHOULDERS, DRIVEWAYS AND ENTRANCES, SUBJECT TO THE GRADATION REQUIREMENTS OF PASSING A 2 INCH SIEVE. THE REMAINING RECLAIMED MATERIAL SHALL BECOME THE PROPERTY OF THE CONTRACTOR.

CSAH 12 ROAD HISTORY
FROM CSAH 1 TO CSAH 26

(1978) GRADED UNDER S.A.P. 47-612-03 (3" CL.5)
(1981) S.A.P. 47-612-04 (6" CL5, 3" BASE, 1 1/2" WEAR)
(1984) SEALCOAT
(1994) 47-612-06 (1 1/2" NW, 1 1/2" WEAR)
(1995) SEALCOAT

TYPICAL SECTION
DETAILS NOT TO SCALE

CSAH 12
FROM CSAH 1 TO CSAH 26
STA. 0+00 to 214+00



NOTES

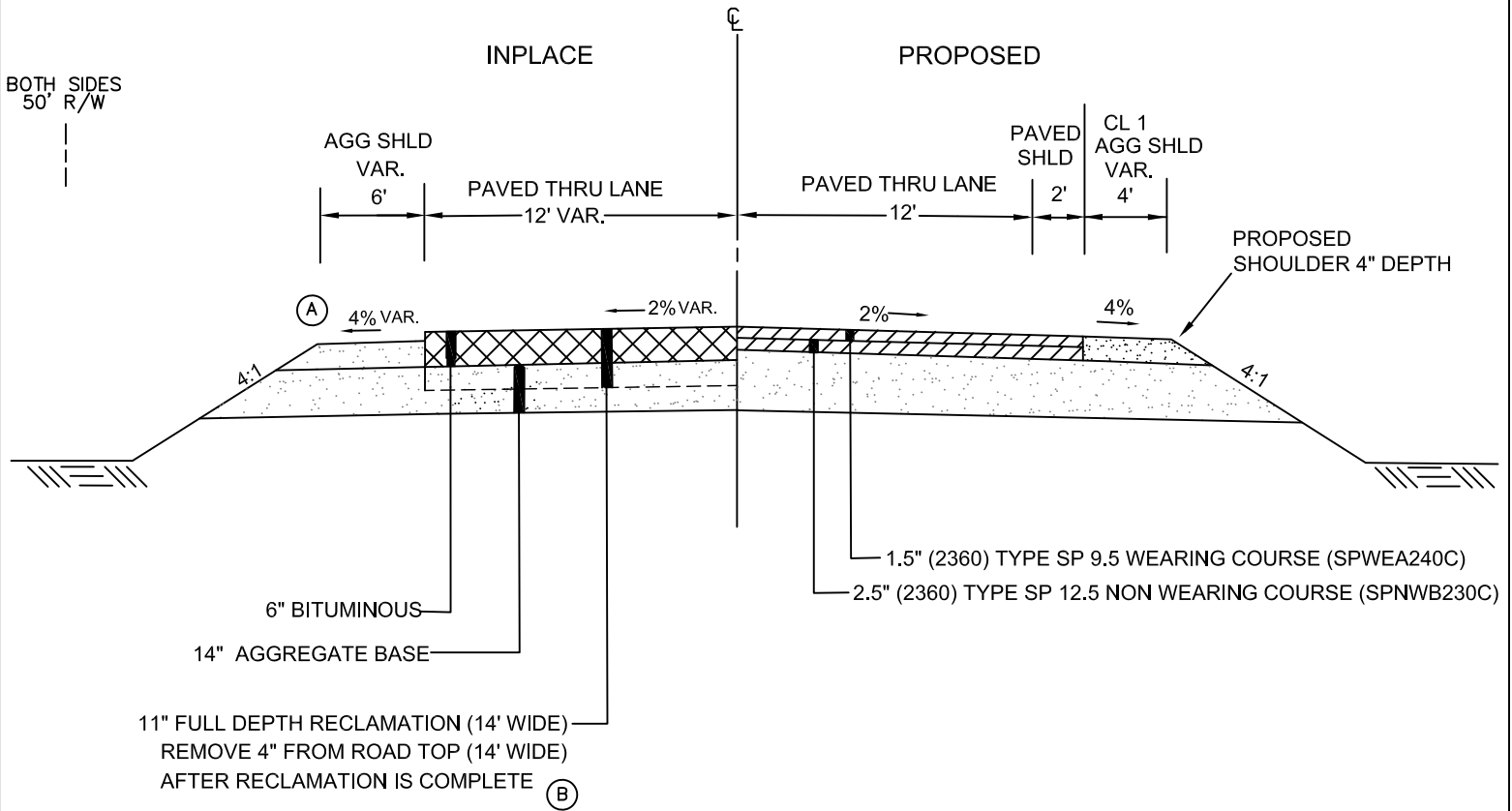
- (A) EXISTING SHOULDER MATERIAL IS APPROXIMATELY 1.5" BELOW PAVEMENT EDGE. EXISTING SHOULDER MATERIAL SHALL BE PULLED IN AND BLENDED WITH RECLAIM MATERIAL AS NECESSARY TO ACCOMMODATE PAVING, INCIDENTAL TO FULL DEPTH RECLAMATION.
- (B) REMOVING, HAULING AND STOCKPILING THE TOP 4" OF RECLAIMED MATERIAL IS INCIDENTAL TO FULL DEPTH RECLAMATION. RECLAIMED MATERIAL MAY BE USED IN LEIU OF CL1 AGG. ON PROPOSED SHOULDERS, DRIVEWAYS AND ENTRANCES, SUBJECT TO THE GRADATION REQUIREMENTS OF PASSING A 2 INCH SIEVE. THE REMAINING RECLAIMED MATERIAL SHALL BECOME THE PROPERTY OF THE CONTRACTOR.

CSAH 12 ROAD HISTORY
FROM CSAH 1 TO CSAH 26

(1978) GRADED UNDER S.A.P. 47-612-03 (3" CL.5)
(1981) S.A.P. 47-612-04 (6" CL5, 3" BASE, 1 1/2" WEAR)
(1984) SEALCOAT
(1994) 47-612-06 (1 1/2" NW, 1 1/2" WEAR)
(1995) SEALCOAT

TYPICAL SECTION
DETAILS NOT TO SCALE

CSAH 12
 FROM CSAH 26 TO EAST MEEKER COUNTY LINE
 STA. 214+00 to 267+30



NOTES

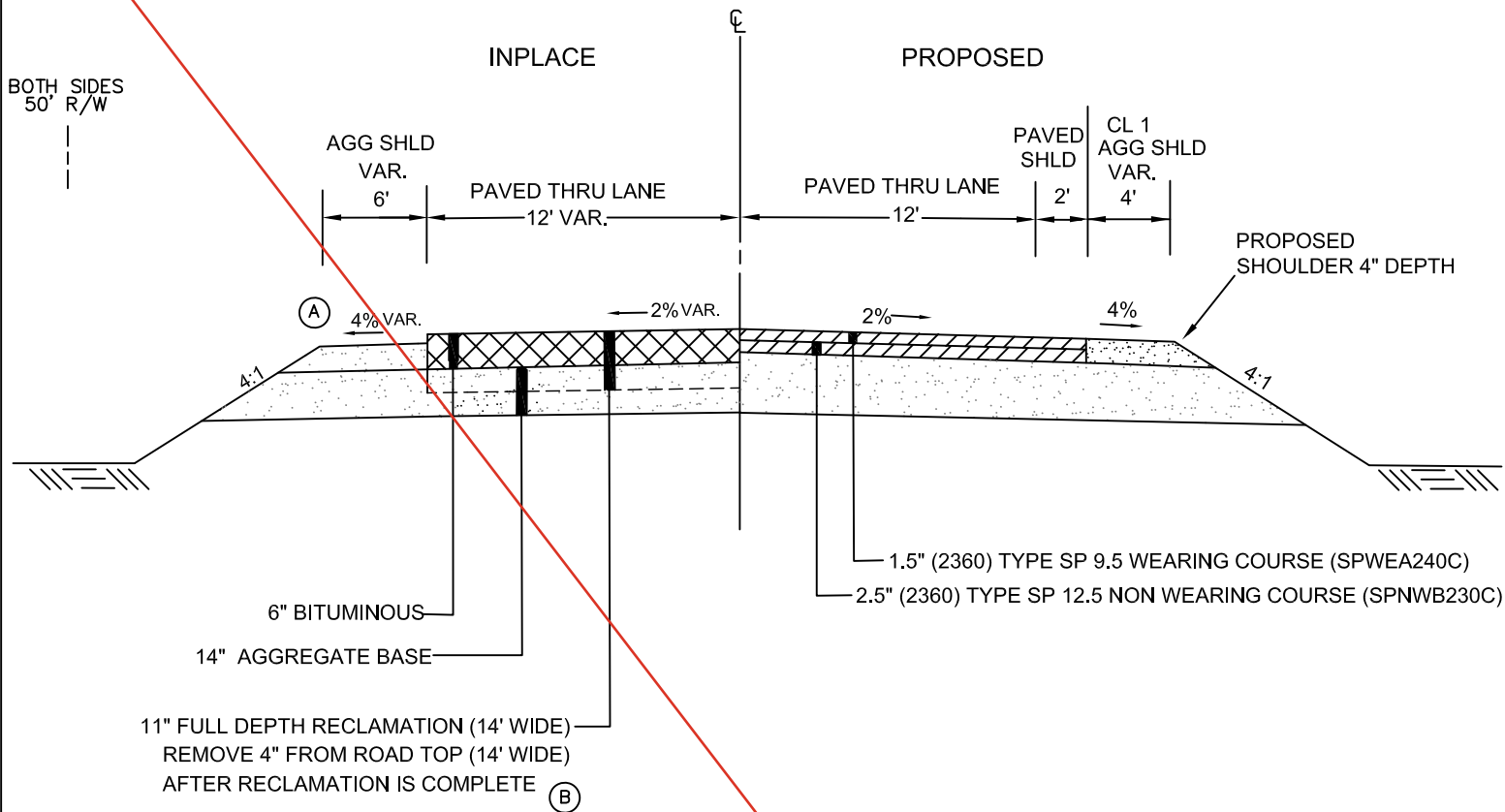
- (A) EXISTING SHOULDER MATERIAL IS APPROXIMATELY 1.5" BELOW PAVEMENT EDGE. EXISTING SHOULDER MATERIAL SHALL BE PULLED IN AND BLENDED WITH RECLAIM MATERIAL AS NECESSARY TO ACCOMMODATE PAVING, INCIDENTAL TO FULL DEPTH RECLAMATION.
- (B) REMOVING, HAULING AND STOCKPILING THE TOP 4" OF RECLAIMED MATERIAL IS INCIDENTAL TO FULL DEPTH RECLAMATION. RECLAIMED MATERIAL MAY BE USED IN LEIU OF CL 1 AGG. ON PROPOSED SHOULDERS, DRIVEWAYS AND ENTRANCES, SUBJECT TO THE GRADATION REQUIREMENTS OF PASSING A 2 INCH SIEVE. THE REMAINING RECLAIMED MATERIAL SHALL BECOME THE PROPERTY OF THE CONTRACTOR.

CSAH 12 ROAD HISTORY
 FROM CSAH 26 TO EAST CO. LINE

- (1974) GRADED UNDER S.A.P. 47-612-01
- (1975) S.A.P. 47-612-02 (9" CL 3, 4" CL5, 1 1/2" PLANT MIX)
- (1978) SEALCOAT
- (1985) 1 1/2" NW, 1 1/2" WEAR
- (1988) SEALCOAT
- (1994) 47-612-06 (1 1/2" NW, 1 1/2" WEAR)
- (1997) SEALCOAT

TYPICAL SECTION
 DETAILS NOT TO SCALE

CSAH 12
 FROM CSAH 26 TO EAST MEEKER COUNTY LINE
 STA. 214+00 to 267+30



NOTES

- (A) EXISTING SHOULDER MATERIAL IS APPROXIMATELY 1.5" BELOW PAVEMENT EDGE. EXISTING SHOULDER MATERIAL SHALL BE PULLED IN AND BLENDED WITH RECLAIM MATERIAL AS NECESSARY TO ACCOMMODATE PAVING, INCIDENTAL TO FULL DEPTH RECLAMATION.
- (B) REMOVING, HAULING AND STOCKPILING THE TOP 4" OF RECLAIMED MATERIAL IS INCIDENTAL TO FULL DEPTH RECLAMATION. RECLAIMED MATERIAL MAY BE USED IN LEIU OF CL 1 AGG. ON PROPOSED SHOULDERS, DRIVEWAYS AND ENTRANCES, SUBJECT TO THE GRADATION REQUIREMENTS OF PASSING A 2 INCH SIEVE. THE REMAINING RECLAIMED MATERIAL SHALL BECOME THE PROPERTY OF THE CONTRACTOR.

CSAH 12 ROAD HISTORY
 FROM CSAH 26 TO EAST CO. LINE

- (1974) GRADED UNDER S.A.P. 47-612-01
- (1975) S.A.P. 47-612-02 (9" CL 3, 4" CL5, 1 1/2" PLANT MIX)
- (1978) SEALCOAT
- (1985) 1 1/2" NW, 1 1/2" WEAR
- (1988) SEALCOAT
- (1994) 47-612-06 (1 1/2" NW, 1 1/2" WEAR)
- (1997) SEALCOAT

TYPICAL SECTION
 DETAILS NOT TO SCALE